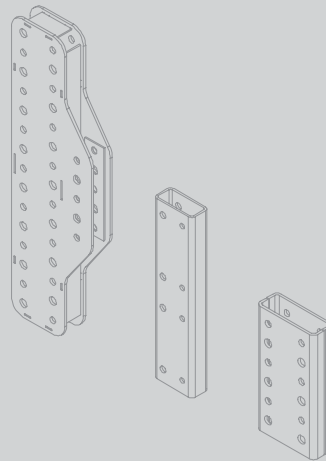


Product Catalogue

VCC Composite Formwork Carriage

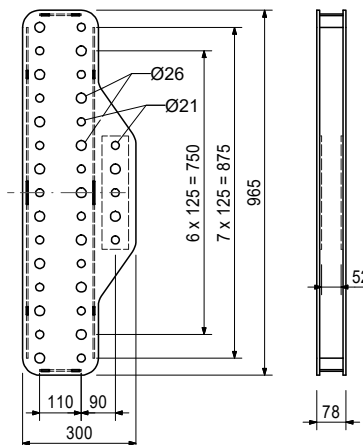
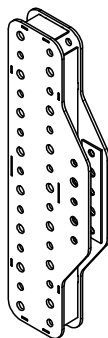


Version 2.0
10/2022

VCC Composite Formwork Carriage

Art no.	Weight [kg]	
111390	32.800	COUPLING FLEX. RESISTANT RCS

For rigidly connecting the Climbing Rails RCS. With connection for the Heavy-Duty Spindles SLS.

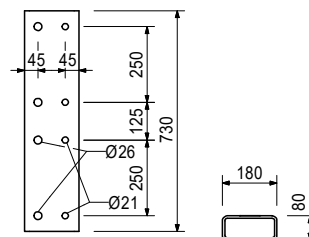


Accessory (not included)

018060	0.014	COTTER PIN 4/1, GALV.
022230	0.033	COTTER PIN 5/1, GALV.
104031	0.462	FILLER PIN D=21X120
111567	0.729	PIN D=26X120

Art no.	Weight [kg]	
113744	21.000	CLIMBING RAIL CONNECTOR RCS 73

For rigid connection of Climbing Rails RCS. Perm. bending moment limited.

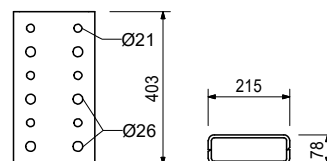
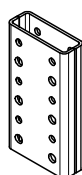


Accessory (not included)

018060	0.014	COTTER PIN 4/1, GALV.
022230	0.033	COTTER PIN 5/1, GALV.
104031	0.462	FILLER PIN D=21X120
111567	0.729	PIN D=26X120

Art no.	Weight [kg]	
111833	12.700	CLIMB.RAIL CONN. 250/125 RCS

For an articulated connection or doubling of the RCS Climbing Rails.



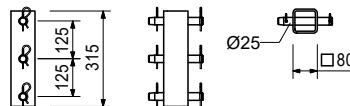
Accessory (not included)

018060	0.014	COTTER PIN 4/1, GALV.
022230	0.033	COTTER PIN 5/1, GALV.
104031	0.462	FILLER PIN D=21X120
111567	0.729	PIN D=26X120

VCC Composite Formwork Carriage

Art no.	Weight [kg]	
109743	6.370	CLIMBING RAIL COUPLING RCS 32

For an articulated connection of Climbing Rails RCS.



Consists of

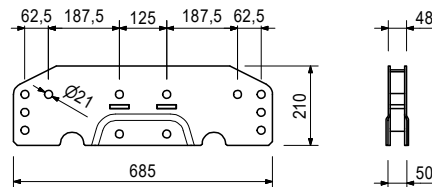
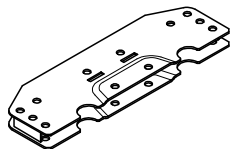
- 6 pc 018060 Cotter Pin 4/1, galv.
- 3 pc 710894 Pin Ø 25 x 180, geomet.

Art no.	Weight [kg]	
103737	10.800	UNIVERSAL COUPLING UK 70

For a rigid connection of Steel Walers SRU and for connecting Heavy-Duty Spindles SLS.

Notes

Permissible load: see PERI Design Tables.

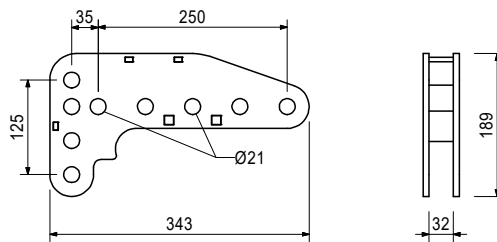
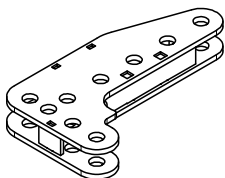


Accessory (not included)

018060	0.014	COTTER PIN 4/1, GALV.
104031	0.462	FILLER PIN D=21X120

Art no.	Weight [kg]	
115623	5.040	CORNER CONNECTOR SRU VARIOKIT

For a rigid connection of Steel Walers SRU.



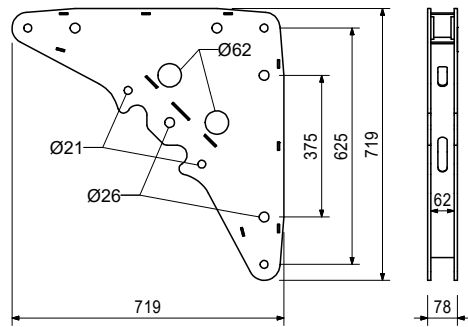
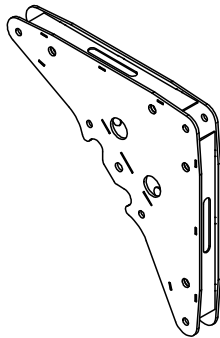
Accessory (not included)

018060	0.014	COTTER PIN 4/1, GALV.
104031	0.462	FILLER PIN D=21X120

VCC Composite Formwork Carriage

Art no.	Weight [kg]	
111382	35.200	CORNER COUPLING FLEX. RES. RCS

For rigidly connecting the Climbing Rails RCS at right-angles, for frame construction or as bracket. With connection for the Heavy-Duty Spindle SLS and Tie Rod Cylinder Yoke SRU.

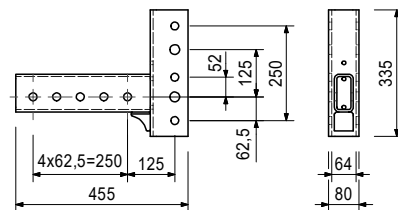
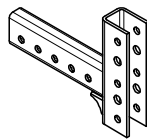


Accessory (not included)

018060	0.014	COTTER PIN 4/1, GALV.
022230	0.033	COTTER PIN 5/1, GALV.
104031	0.462	FILLER PIN D=21X120
110755	5.140	TIE YOKE SRU
111567	0.729	PIN D=26X120

Art no.	Weight [kg]	
111283	9.950	CONNECTOR RCS/SRU

For right-angled connection of Steel Walers SRU to the Climbing Rails RCS and for attaching guardrail posts to Steel Walers SRU.

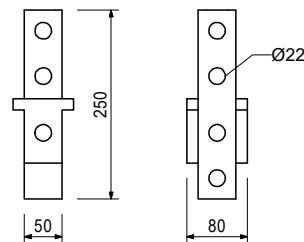
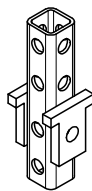


Accessory (not included)

018060	0.014	COTTER PIN 4/1, GALV.
022230	0.033	COTTER PIN 5/1, GALV.
104031	0.462	FILLER PIN D=21X120
111567	0.729	PIN D=26X120

Art no.	Weight [kg]	
111279	2.450	CROSS CONNECTOR VARIOKIT

For right-angled connection of Steel Walers SRU with SRU or Steel Walers SRU with RCS.



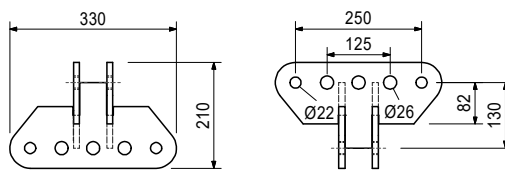
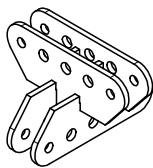
Accessory (not included)

018060	0.014	COTTER PIN 4/1, GALV.
104031	0.462	FILLER PIN D=21X120

VCC Composite Formwork Carriage

Art no.	Weight [kg]	
123509	13.400	CROSS CONNECTOR RCS

For crosswise connection of Climbing Rails RCS.



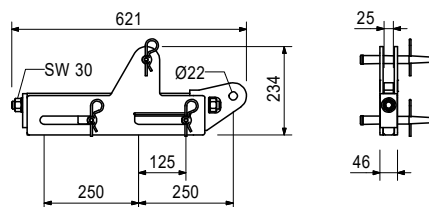
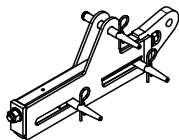
Accessory (not included)

018060	0.014	COTTER PIN 4/1, GALV.
022230	0.033	COTTER PIN 5/1, GALV.
104031	0.462	FILLER PIN D=21X120
111567	0.729	PIN D=26X120

Accessory (not included)

Art no.	Weight [kg]	
113933	17.400	ADJUSTING UNIT VARIOKIT

For an articulated connection of Steel Walers SRZ and SRU. With integrated adjustment feature.



Accessory (not included)

018060	0.014	COTTER PIN 4/1, GALV.
104031	0.462	FILLER PIN D=21X120

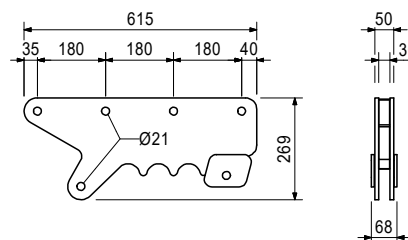
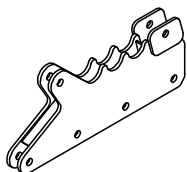
Accessory (not included)

Consists of

- 3 pc 018060 Cotter Pin 4/1, galv.
- 3 pc 104031 Fitting Pin Ø 21 x 120

Art no.	Weight [kg]	
022001	17.900	WALER HINGE, GALV.

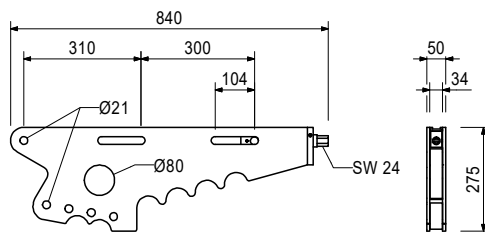
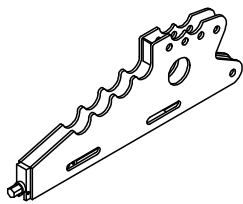
For an articulated connection of Steel Walers SRZ and SRU.



VCC Composite Formwork Carriage

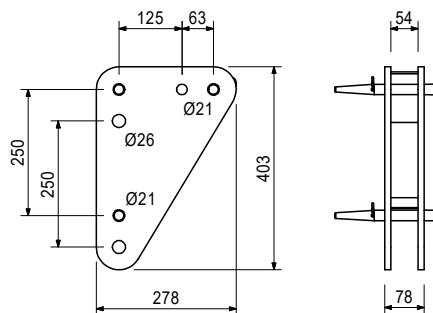
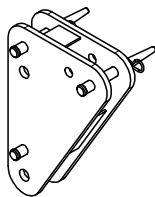
Art no.	Weight [kg]	
022002	18.500	WALER HINGE ADJUSTABLE, GALV.

For an articulated connection of Steel Walers SRZ and SRU. With integrated adjustment feature.



Art no.	Weight [kg]		X [mm]
123497	15.700	SPINDLE BRACKET VARIOKIT	100

For mounting Heavy-Duty-Spindles SLS to the Climbing Rail RCS with little spindle inclination.

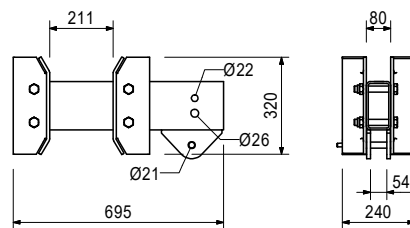
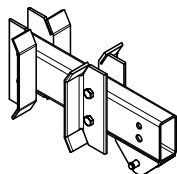


Consists of

- 3 pc 018060 Cotter Pin 4/1, galv.
- 3 pc 104031 Fitting Pin Ø 21 x 120

Art no.	Weight [kg]	
123513	37.800	SLIDING CONNECTOR VARIOKIT

For right-angled and slidable T-connection of Climbing Rails RCS.



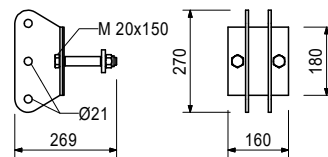
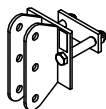
Consists of

- 1 pc 018060 Cotter Pin 4/1, galv.
- 1 pc 104031 Fitting Pin Ø 21 x 120

VCC Composite Formwork Carriage

Art no.	Weight [kg]	
117425	7.740	CROSS CONNECTOR VST

For connecting Horizontal Ledgers VST and Diagonal Struts VST cross to the direction of the frame.

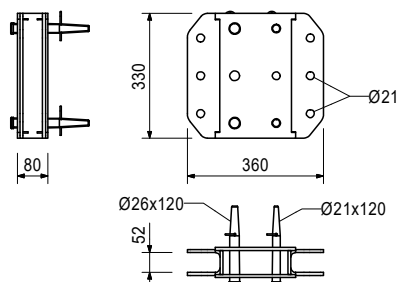
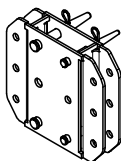


Consists of

- 1 pc 117492 Sleeve VST, galv.
- 2 pc 711084 Bolt ISO 4014 M20 x 150-8.8, galv.
- 2 pc 781053 Nut ISO 7040 M20-8, galv.

Art no.	Weight [kg]	
117411	18.600	BRACING CONNECTOR VST

For connecting Horizontal Ledgers VST and Diagonal Struts VST in direction of the frame.

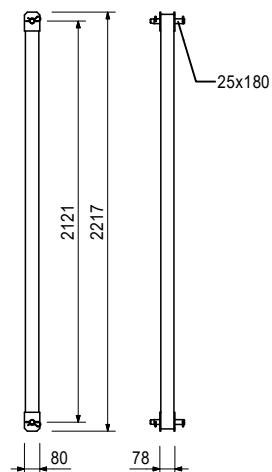
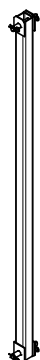


Consists of

- 2 pc 018060 Cotter Pin 4/1, galv.
- 2 pc 022230 Cotter Pin 5/1, galv.
- 2 pc 104031 Fitting Pin Ø 21 x 120
- 2 pc 111567 Fitting Pin Ø 26 x 120

Art no.	Weight [kg]		L [mm]	X [mm]	Y [mm]
110012	23.500	DIAGONAL STRUT L= 2121MM RCS	2217	1500	1500

For bracing RCS Framework Brackets.



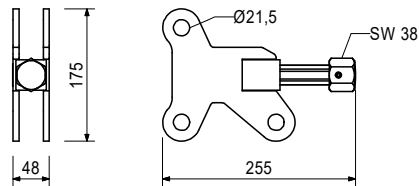
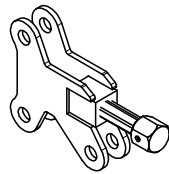
Consists of

- 1 pc 018060 Cotter Pin 4/1, galv.
- 1 pc 105032 Nut ISO 7040 M24-8, galv.
- 2 pc 109612 Bolt ISO 4014 M24 x 130-8.8, galv.
- 1 pc 710894 Pin Ø 25 x 180, geomet.

VCC Composite Formwork Carriage

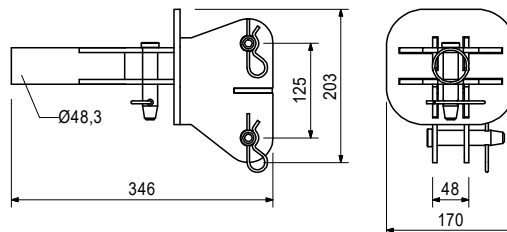
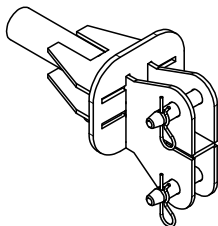
Art no.	Weight [kg]	
115616	3.210	BEARING PACKER VARIOKIT

Used as connector part and adjustable compression point.



Art no.	Weight [kg]	
104083	5.580	FTF WALING COUPL.WITHOUT RS-AD

For assembly of a horizontal Steel Waler SRU on the FTF Bracket 500 or vertical Steel Walers SRU. With connection for scaffold tube.

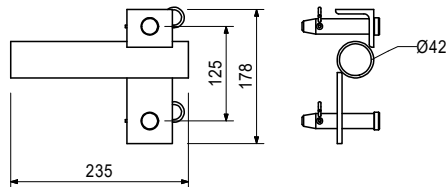
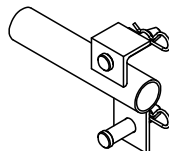


Consists of

- 3 pc 018060 Cotter Pin 4/1, galv.
- 3 pc 105822 Bolt Ø 20 x 102, galv.

Art no.	Weight [kg]	
103945	1.840	SCAFFOLD TUBE CONNECTOR FTF

For connecting scaffold tubes to the Steel Walers SRU.



Consists of

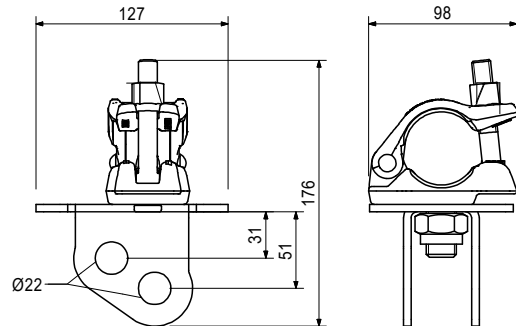
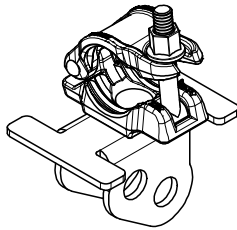
- 2 pc 018060 Cotter Pin 4/1, galv.
- 2 pc 105822 Bolt Ø 20 x 102, galv.

VCC Composite Formwork Carriage

Art no.	Weight [kg]	
130045	1.670	SCAFF. TUBE ADAPTER D48 ALPHA

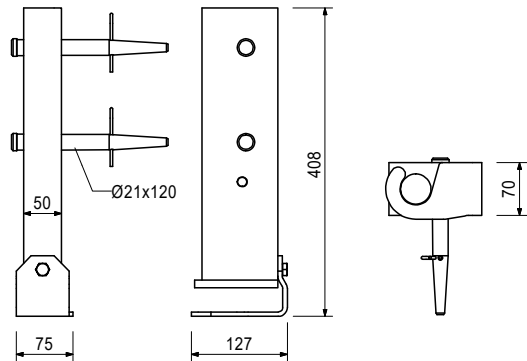
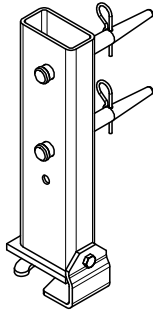
Notes

Also compatible for mounting in SRU Steel Walers.



Art no.	Weight [kg]	
115682	5.770	HEIGHT ADJUSTMENT VARIOKIT

For height adjustment of Steel Walers SRU.



Accessory (not included)

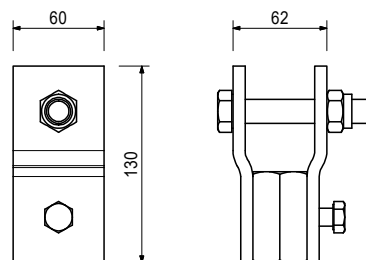
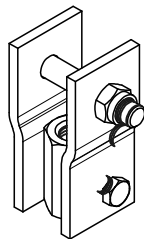
100242	4.570	ADJ. BASE PLATE UJB 38-80/55
100411	3.390	ADJ. BASE PLATE UJB 38-50/30

Consists of

- 2 pc 018060 Cotter Pin 4/1, galv.
- 2 pc 104031 Fitting Pin Ø 21 x 120

Art no.	Weight [kg]	
057049	2.570	PANEL SUSPENS.ADAPTOR DW20 ACS

Connecting Betomax 20 with Trolley HTP.



Consists of

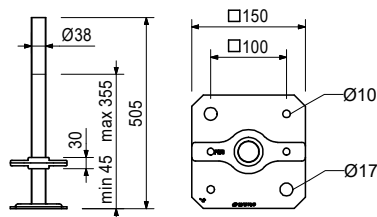
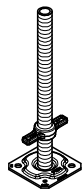
- 1 pc 070890 Nut ISO 7040 M16-8, galv.
- 1 pc 710266 Bolt ISO 4017 M12 x 25-8.8, galv.
- 1 pc 721729 Bolt ISO 4014 M16 x 90-8.8, galv.

VCC Composite Formwork Carriage

Art no.	Weight [kg]	
100411	3.390	ADJ. BASE PLATE UJB 38-50/30

Notes

With captive red quick jack nut.



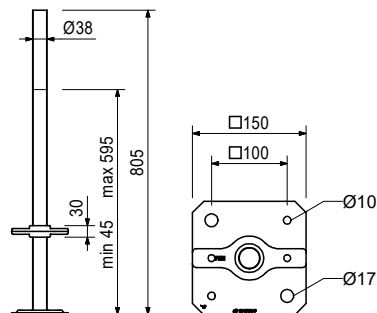
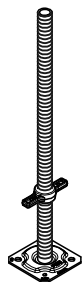
Accessory (not included)

100863	1.020	HANDLE LOCK UJS
--------	-------	------------------------

Art no.	Weight [kg]	
100242	4.570	ADJ. BASE PLATE UJB 38-80/55

Notes

With captive yellow quick jack nut.



Accessory (not included)

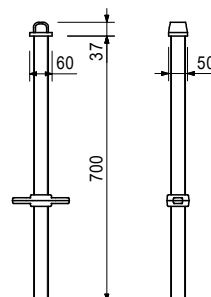
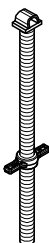
100863	1.020	HANDLE LOCK UJS
--------	-------	------------------------

Art no.	Weight [kg]	
109630	4.240	SPINDLE HEAD SRU

For connecting the Steel Walers SRU and SRZ on shoring scaffolds.

Notes

With captive quick jack nut.



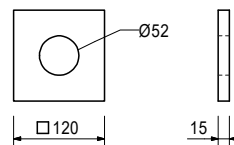
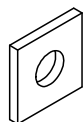
Accessory (not included)

018060	0.014	COTTER PIN 4/1, GALV.
104031	0.462	FILLER PIN D=21X120

VCC Composite Formwork Carriage

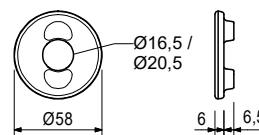
Art no.	Weight [kg]	
114618	1.450	SPINDLE COUNTER PLATE VARIOKIT

For transferring the spindle load into SRU/SRZ.



Art no.	Weight [kg]	
		Compensation Washers, galv.
024000	0.131	COMPENSATION WASHER 16 GALV.
024180	0.126	COMPENSATION WASHER 20 GALV.

For assembling in the VKZ holes.

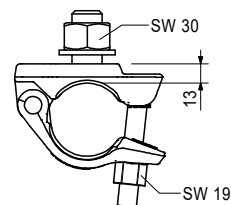
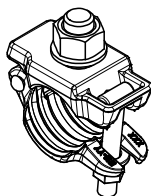


Accessory (not included)

024910	0.303	HEX BOLT ISO4014-M20X100-8.8VZ
070890	0.030	HEX NUT ISO7040-M16-8-GALV.
710219	0.184	HEX BOLT ISO4014-M16X100-8.8VZ
781053	0.065	HEX NUT ISO7040-M20-8-VZ

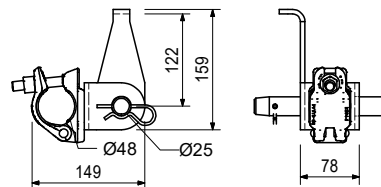
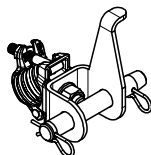
Art no.	Weight [kg]	
131404	1.080	SCREW-ON COUPL.-2 HT B D48-M20

For Screwing Scaffold Tubes \varnothing 48 mm to components up to 9 mm thickness.



Art no.	Weight [kg]	
110084	2.510	SCAFFOLD TUBE ADAPTER \varnothing48 RCS

For connecting Scaffold Tubes \varnothing 48 mm to Climbing Rails RCS.



Consists of

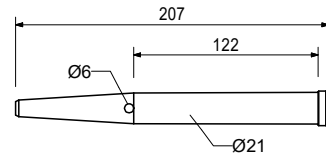
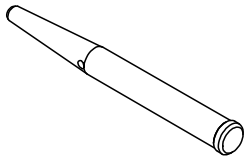
- 1 pc 017040 Screw-On Coupler AK 48, galv.
- 2 pc 018060 Cotter Pin 4/1, galv.
- 1 pc 710894 Pin \varnothing 25 x 180, geomet.

VCC Composite Formwork Carriage

Art no.	Weight [kg]	
---------	-------------	--

104031 0.462 **FILLER PIN D=21X120**

For different connections.



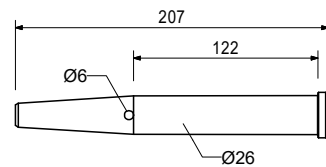
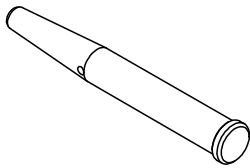
Accessory (not included)

018060 0.014 **COTTER PIN 4/1, GALV.**

Art no.	Weight [kg]	
---------	-------------	--

111567 0.729 **PIN D=26X120**

For different connections.



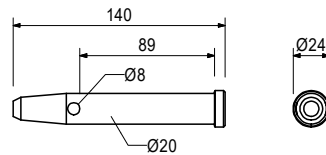
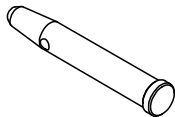
Accessory (not included)

018060 0.014 **COTTER PIN 4/1, GALV.**

Art no.	Weight [kg]	
---------	-------------	--

105400 0.330 **BOLT 20X140-S355, GALV.**

For different connections.



Accessory (not included)

018060 0.014 **COTTER PIN 4/1, GALV.**

Art no.	Weight [kg]	
---------	-------------	--

Cotter Pins

018060 0.014 **COTTER PIN 4/1, GALV.**

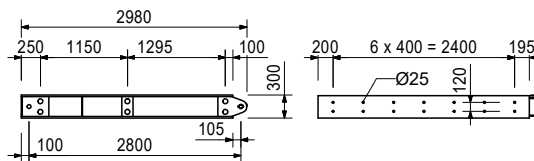
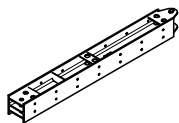
022230 0.033 **COTTER PIN 5/1, GALV.**



VCC Composite Formwork Carriage

Art no.	Weight [kg]	
022010	379.000	MAIN BEAM HDT 280 CM

System steel girder for use with HD 200 Main Beam areas and special constructions.
Profile HEB 300.

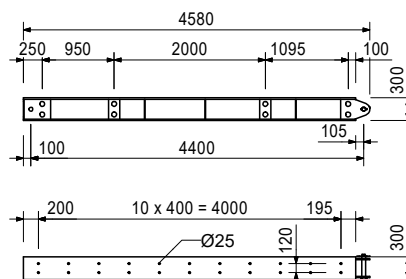
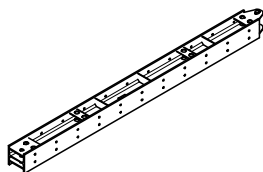


Consists of

- 1 pc 105435 Bolt Ø 50 x 330
- 1 pc 710618 Cotter Pin 8/1, galv.
- 1 pc 722457 Dowel Pin Ø 10 x 70, galv.

Art no.	Weight [kg]	
022009	582.000	MAIN BEAM HDT 440 CM

System steel girder for use with HD 200 Main Beam areas and special constructions.
Profile HEB 300.

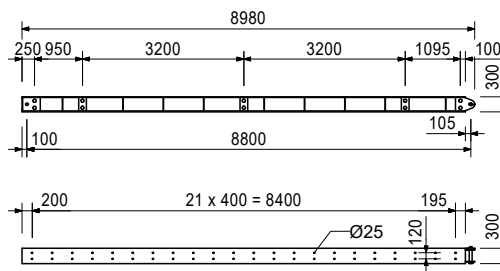
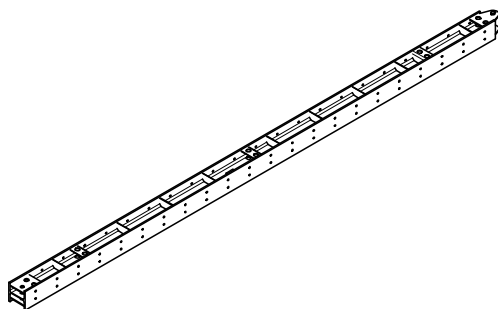


Consists of

- 1 pc 105435 Bolt Ø 50 x 330
- 1 pc 710618 Cotter Pin 8/1, galv.
- 1 pc 722457 Dowel Pin Ø 10 x 70, galv.

Art no.	Weight [kg]	
022008	1,130.000	MAIN BEAM HDT 880 CM

System steel girder for use with HD 200 Main Beam areas and special constructions.
Profile HEB 300.



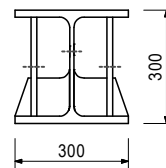
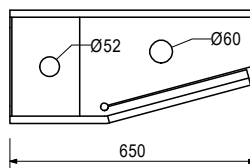
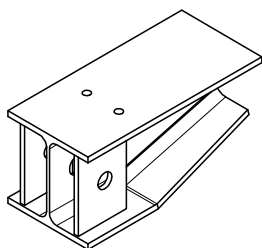
Consists of

- 1 pc 105435 Bolt Ø 50 x 330
- 1 pc 710618 Cotter Pin 8/1, galv.
- 1 pc 722457 Dowel Pin Ø 10 x 70, galv.

VCC Composite Formwork Carriage

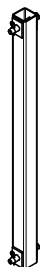
Art no.	Weight [kg]	
115074	81.900	BEAM STARTER HDT

Access aid for HDT Main Beams onto the heavy duty rollers. Holes and connectors match the HDT Main Beam.



Art no.	Weight [kg]	
		Truss Struts
112548	51.100	TRUSS STRUT HD 2000
112549	56.500	TRUSS STRUT HD 2247

For assembling truss girders with Main Beam HDT.

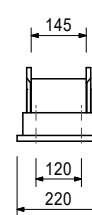
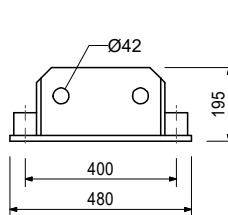
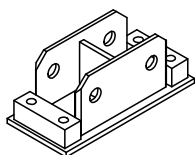


Consists of

2 pc 112547 Pin HD Ø 40 x 260

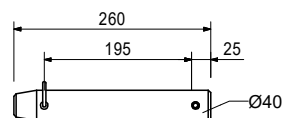
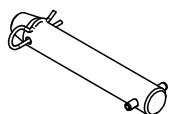
Art no.	Weight [kg]	
112558	34.900	TRUSS BRACKET HD

For assembly on the Main Beam HDT.



Art no.	Weight [kg]	
112547	2.490	PIN HD D=40X260

For connecting the Truss Strut HD with the Truss Bracket HD.



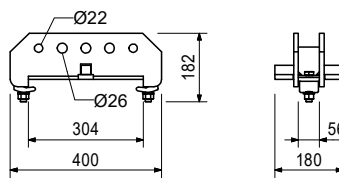
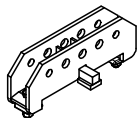
Consists of

1 pc 022230 Cotter Pin 5/1, galv.
 1 pc 722457 Dowel Pin Ø 10 x 70, galv.

VCC Composite Formwork Carriage

Art no.	Weight [kg]	
112816	12.100	SPINDLE SPREADER VARIOKIT

For connecting spindles or Climbing Rail RCS transversely to the Main Beam HDT.



Consists of

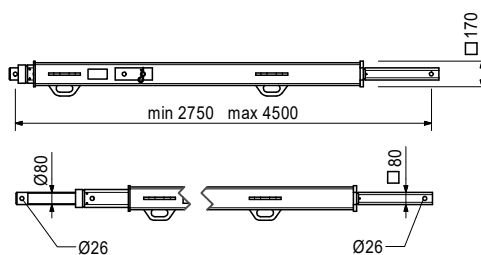
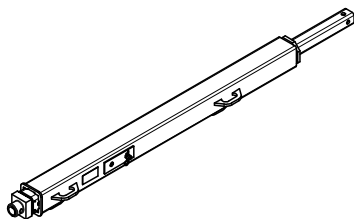
- 2 pc 112815 Clamping Plate M16 Nova Grip
- 2 pc 710229 Nut ISO 4032 M16-8, galv.
- 2 pc 711074 Washer ISO 7089 200 HV, A 16, galv.
- 2 pc 714093 Bolt ISO 4014 M16 x 70-8.8, galv.

Art no.	Weight [kg]		min. L [mm]	max. L [mm]
118404	165.000	STRUT VARIOKIT 275-450	2750	4500

For the bracing of system solutions.

Notes

Permissible load: see PERI Design Tables.



Accessory (not included)

022230	0.033	COTTER PIN 5/1, GALV.
111567	0.729	PIN D=26X120

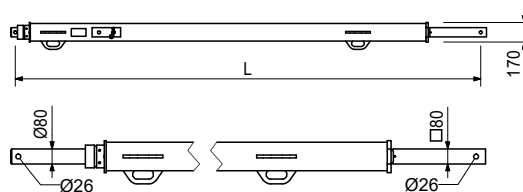
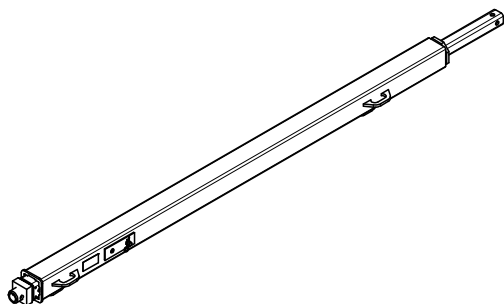
VCC Composite Formwork Carriage

Art no.	Weight [kg]		min. L [mm]	max. L [mm]
Struts VARIOKIT				
112840	239.000	STRUT VARIOKIT L= 400-700	4000	7000
112841	295.000	STRUT VARIOKIT L= 600-900	6000	9000

For the bracing of system solutions.

Notes

Permissible load: see PERI Design Tables.



Accessory (not included)

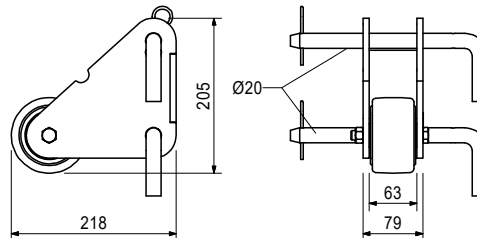
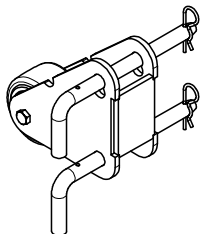
022230	0.033	COTTER PIN 5/1, GALV.
111567	0.729	PIN D=26X120

Art no.	Weight [kg]	
116469	5.920	HEAVY DUTY CASTOR RCS 1,5T

For assembling in Climbing Rails RCS, foldable.

Notes

Permissible load-bearing capacity 1.5 t.



Consists of

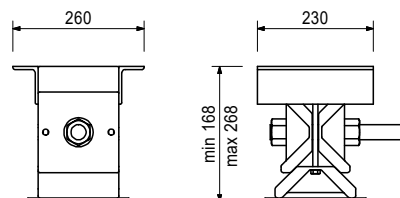
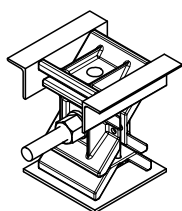
- 2 pc 018060 Cotter Pin 4/1, galv.
- 2 pc 113012 Pin Ø 20 x 260, galv.

Art no.	Weight [kg]	
024590	32.000	LOWERING WEDGE 420 KN, PAINT.

For releasing and lowering large loads.

Notes

- Take Type Test into consideration.
- Wrench size SW 46.
- Separate Design Information on request.



VCC Composite Formwork Carriage

Art no.	Weight [kg]	
117930	53.300	LOWERING WEDGE 1000 KN, PAINT.

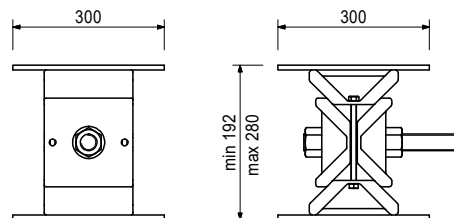
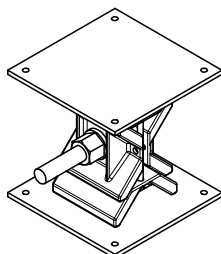
For releasing and lowering large loads.

Notes

Take Type Test into consideration.

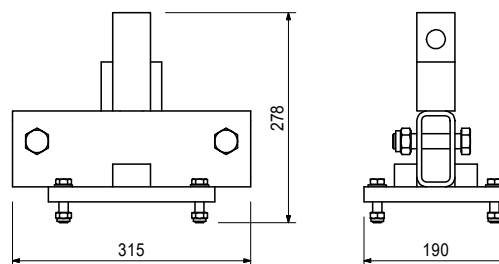
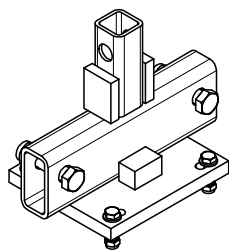
Wrench size SW 80.

Separate Design Information on request.



Art no.	Weight [kg]	
111274	13.600	HEAVY DUTY ROLL. BRA. VARIOKIT

For connecting the Heavy Duty Roller 150 kN, item no. 022040 and 200 kN, item no. 022041 to Steel Waler SRU.



Consists of

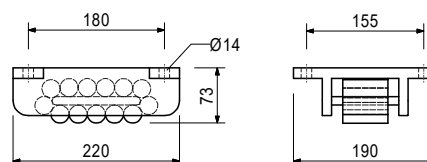
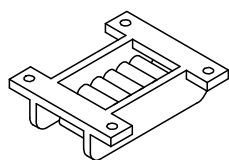
- 2 pc 710226 Bolt ISO 4014 M20 x 90-8.8, galv.
- 4 pc 710381 Nut ISO 7042 M12-8, galv.
- 4 pc 721817 Bolt ISO 4014 M12 x 50-8.8, galv.
- 4 pc 780702 Washer ISO 7089 200 HV, A 12, galv.
- 2 pc 781053 Nut ISO 7040 M20-8, galv.

Art no.	Weight [kg]	
022040	8.400	ROLLING CART 150 KN / B-II

Moving device for special and heavy-duty constructions.

Notes

Permissible load-bearing capacity 150 kN.



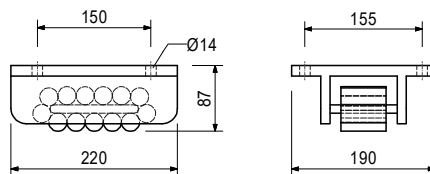
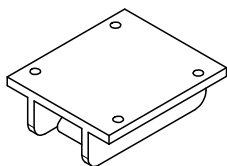
VCC Composite Formwork Carriage

Art no.	Weight [kg]	
022041	11.700	ROLLING CART 200 KN / A-II

Moving device for special and heavy-duty constructions.

Notes

Permissible load-bearing capacity 200 kN.

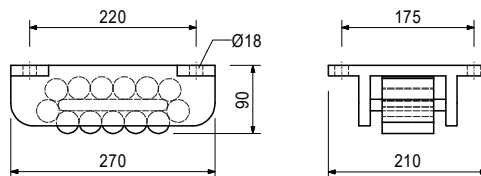
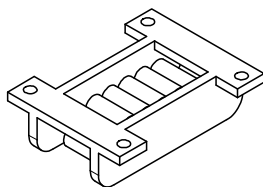


Art no.	Weight [kg]	
022042	14.100	ROLLING CART 300 KN / B-III

Moving device for special and heavy-duty constructions.

Notes

Permissible load-bearing capacity 300 kN.

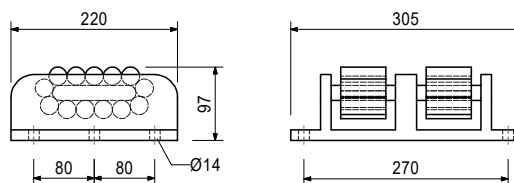
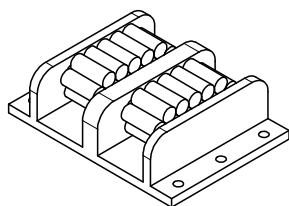


Art no.	Weight [kg]	
114335	24.000	HEAVY DUTY ROLLER 340KN/ZAM-H-

Moving device for special and heavy-duty constructions.

Notes

Permissible load-bearing capacity 340 kN.

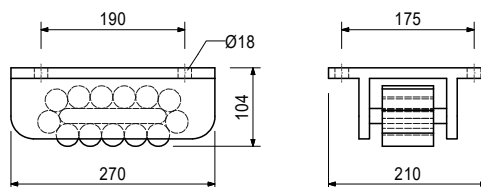
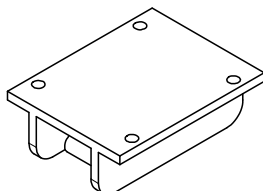


Art no.	Weight [kg]	
022044	19.300	ROLLING CART 400 KN / A-III

Moving device for special and heavy-duty constructions.

Notes

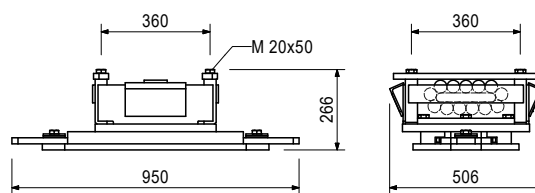
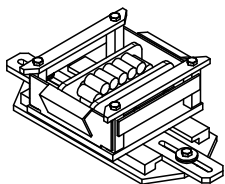
Permissible load-bearing capacity 400 kN.



VCC Composite Formwork Carriage

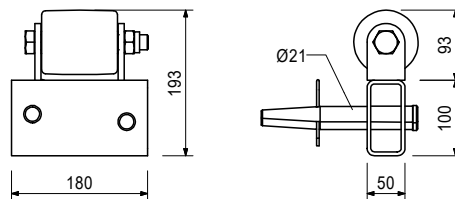
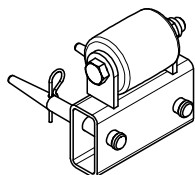
Art no.	Weight [kg]	
113474	194.000	HEAVY DUTY ROLLER 650KN, ADJU.

Moving device for special and heavy-duty constructions. Complete with holder.



Art no.	Weight [kg]	
114599	4.980	PRESSURE ROLLER VARIOKIT

For assembling in Steel Waler SRU. Used as moveable compression point.



Consists of

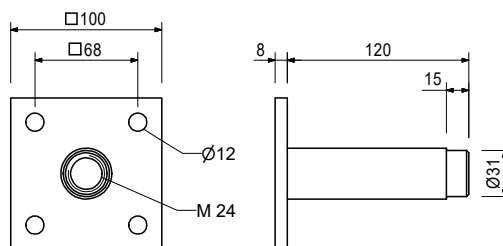
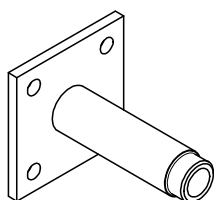
- 2 pc 018060 Cotter Pin 4/1, galv.
- 2 pc 104031 Fitting Pin Ø 21 x 120

Art no.	Weight [kg]	
026230	1.010	BOLT ANCHOR SLEEVE M 24

For anchoring of platform systems.

Notes

Separate design information on request.



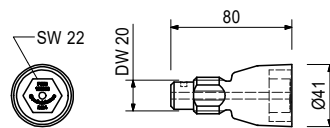
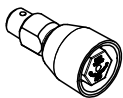
Accessory (not included)

026240	0.026	CONE PP D=31/26, C=25
026250	0.005	PLUG PP D=26
026420	0.123	ANCHOR POSIT. STUD M 24, GALV.
115150	0.200	ANCHOR POSITION. M24X65, GALV.
116233	0.116	CONE FRC D=32/52, C=40
116234	0.033	PLUG FRC D=32
123800	0.045	THREADED CONE M24/40

VCC Composite Formwork Carriage

Art no.	Weight [kg]	
123800	0.045	THREADED CONE M24/40

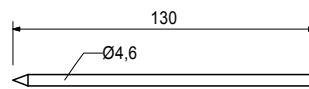
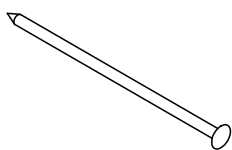
For pre-fixing of Anchor Sleeve M24 with a concrete cover of 40 mm in bridge cantilevers



Accessory (not included)

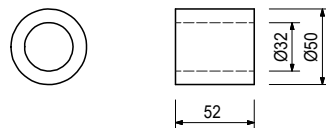
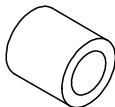
026230	1.010	BOLT ANCHOR SLEEVE M 24
123820	0.063	PLUG FRC D=40
129157	0.017	NAIL 4,6X130

Art no.	Weight [kg]	
129157	0.017	NAIL 4,6X130



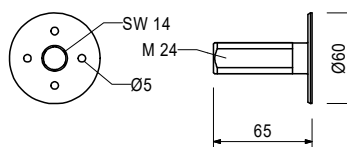
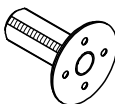
Art no.	Weight [kg]	
116233	0.116	CONE FRC D=32/52, C=40

Results in concrete cover of 40 mm in combination with Tie Sleeve M24. Made of fibre-reinforced concrete.



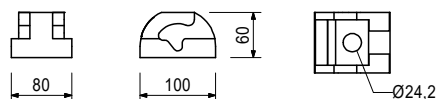
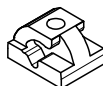
Art no.	Weight [kg]	
115150	0.200	ANCHOR POSITION. M24X65, GALV.

For fixing the Anchor Sleeve M24 if fixation through formlining is not possible.



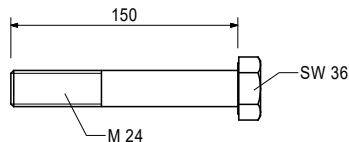
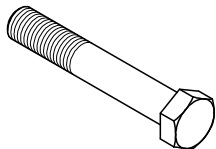
Art no.	Weight [kg]	
114534	2.220	SUSPENSION HEAD M24 VARIKOIT

Fixing part for mounting the Roller Unit VARIOKIT underneath the bridge cantilever.



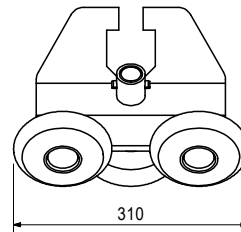
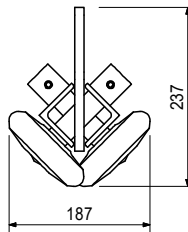
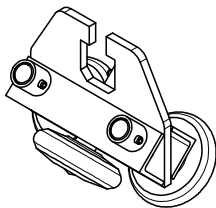
VCC Composite Formwork Carriage

Art no.	Weight [kg]	
104540	0.654	HEX BOLT ISO4014 M24X150-8.8-G



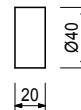
Art no.	Weight [kg]	
114535	18.000	ROLLER UNIT VARIOKIT

Roller unit and mounting suspension for Guide Rails VARIOKIT.



Art no.	Weight [kg]	
123820	0.063	PLUG FRC D=40

For closing the tie hole when using Threaded Cone M24.



Art no.	Weight [kg]	
116234	0.033	PLUG FRC D=32

For closing the FRC Tube Ø 32. Made of fibre-reinforced concrete.



Art no.	Weight [kg]	
031550	1.000	REPOXAL GLUE

Two-component adhesive for bonding fibre reinforced concrete plugs.
Requirements: 1 kg adhesive for approx. 200 Plugs FZR 32 or 330 Plugs FZR 22.

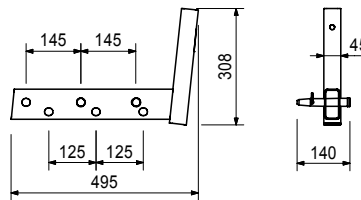
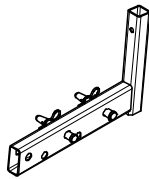
Notes

See Safety Data sheet!
Delivery unit 1.0 kg

VCC Composite Formwork Carriage

Art no.	Weight [kg]	
104131	3.940	HANDRAIL HOLDER SRU

For assembling a guardrail to the Steel Walers SRU and SRZ, Profile U100 to U140.



Accessory (not included)

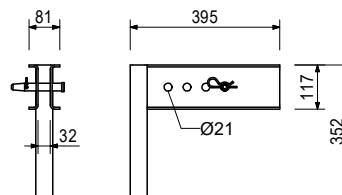
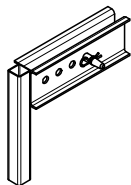
061260	6.150	HANDRAIL POST SGP
116292	4.720	GUARDRAIL POST HSGP-2

Consists of

- 2 pc 018060 Cotter Pin 4/1, galv.
- 2 pc 105400 Pin Ø 20 x 140, galv.

Art no.	Weight [kg]	
101290	5.670	HANDRAIL HOLDER GT24/VT20

For assembling a guardrail to GT 24 and VT 20 Girders.



Accessory (not included)

061260	6.150	HANDRAIL POST SGP
116292	4.720	GUARDRAIL POST HSGP-2

Consists of

- 1 pc 018060 Cotter Pin 4/1, galv.
- 1 pc 105400 Pin Ø 20 x 140, galv.

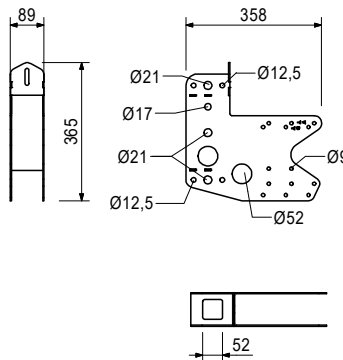
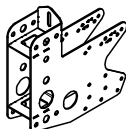
VCC Composite Formwork Carriage

Art no.	Weight [kg]	
126088	4.390	GUARDRAIL POST HOLDER MULTI

For fixing of an end guardrail post on Girders GT 24, VT 20 or KH 80/160. Fixing of the guardrail posts by means of Hex. Bolts M20.

Notes

Suitable for
 Guardrail Post RCS 226 item no.: 109720
 Guardrail Post RCS / SRU 184 item no.: 114328
 Vertical scaffold tubes
 Special post QR 50 x 50

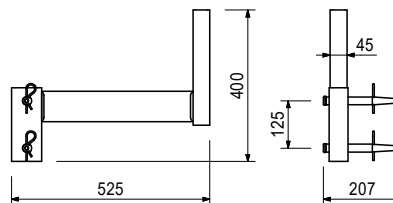
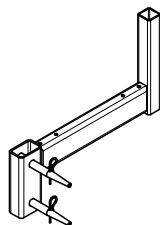


Accessory (not included)

024090	0.005	NUT M8, GALV.
024470	0.008	TSS-TORX 6X60, GALV.
710285	0.050	HEX BOLT ISO4014-M08X100-8.8VZ

Art no.	Weight [kg]	
114557	6.980	PLATFORM BEAM SRU

For assembling a platform and guardrail at vertical Steel Waler SRU.



Accessory (not included)

116292	4.720	GUARDRAIL POST HSGP-2
--------	-------	------------------------------

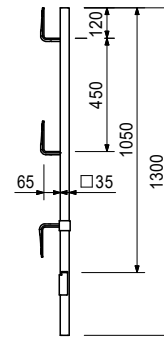
Consists of

2 pc 018060 Cotter Pin 4/1, galv.
 2 pc 104031 Fitting Pin Ø 21 x 120

VCC Composite Formwork Carriage

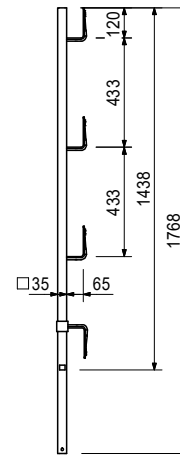
Art no.	Weight [kg]	
116292	4.720	GUARDRAIL POST HSGP-2

As guardrail for different systems.



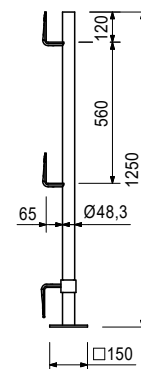
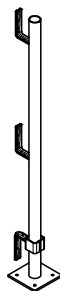
Art no.	Weight [kg]	
061260	6.150	HANDRAIL POST SGP

As guardrail for different systems.



Art no.	Weight [kg]	
019040	6.480	HANDRAIL POST PD8

As guardrail for different systems. Screwed onto sub-structure.



VCC Composite Formwork Carriage

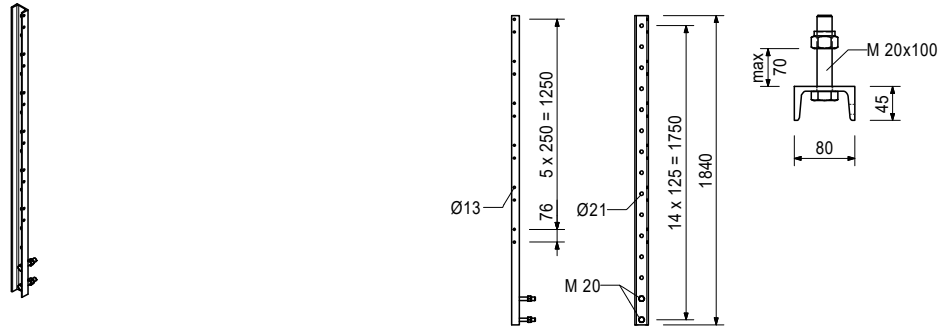
Art no.	Weight [kg]	
116363	0.089	SPACER RCS 184

Compensator between Angle Connector RCS/SRU and Guardrail Post RCS 184.



Art no.	Weight [kg]	
114328	16.600	HANDRAIL POST RCS/SRU 184

For assembly of the guardrail on the Platform Beam RCS/SRU or Guardrail Post Holder Multi.



Accessory (not included)

057345	0.010	WASHER 9MM DIN 434 GALV.
110296	0.220	CLAMP A64 DIN 3570 M12, GALV.
710330	0.017	HEX NUT ISO4032-M12-8-VZ
710709	0.036	F.H.BOLT M08X065MUDIN603-4.8VZ
780354	0.002	WASHER ISO7089-08-200HV-VZ

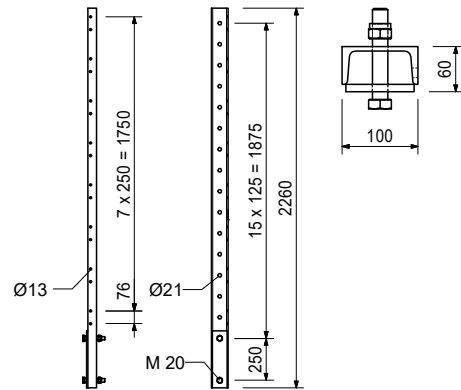
Consists of

- 2 pc 114727 Bolt ISO 4017 M20 x 100-8.8, galv.
- 2 pc 781053 Nut ISO 7040 M20-8, galv.

VCC Composite Formwork Carriage

Art no.	Weight [kg]	
109720	26.600	GUARDRAIL POST U100, 225 RCS

For assembly of the guardrail on the main platform with RCS Formwork Scaffolding or on Guardrail Post Holder Multi.



Accessory (not included)

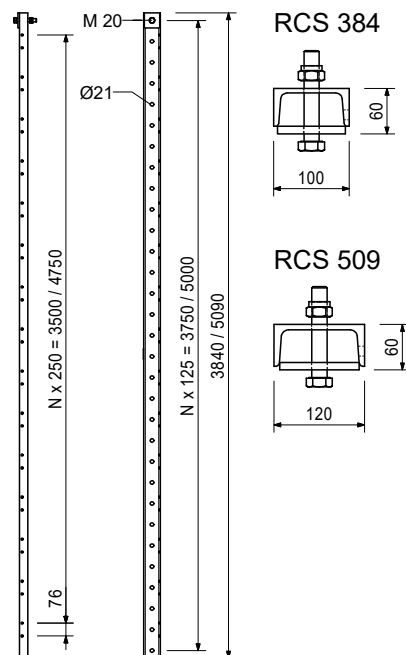
057345	0.010	WASHER 9MM DIN 434 GALV.
110296	0.220	CLAMP A64 DIN 3570 M12, GALV.
710330	0.017	HEX NUT ISO4032-M12-8-VZ
710709	0.036	F.H.BOLT M08X065MUDIN603-4.8VZ
780354	0.002	WASHER ISO7089-08-200HV-VZ

Consists of

2 pc 104477 Bolt ISO 4014 M20 x 120-8.8, galv.
2 pc 781053 Nut ISO 7040 M20-8, galv.

Art no.	Weight [kg]	
		Guardrail Posts RCS
109721	40.700	GUARDRAIL POST U100, 384 RCS
109773	67.900	GUARDRAIL POST U120, 509 RCS

For assembly of the guardrail on the intermediate and finishing platforms with RCS Formwork Scaffolding or as horizontal strut in the bracing.



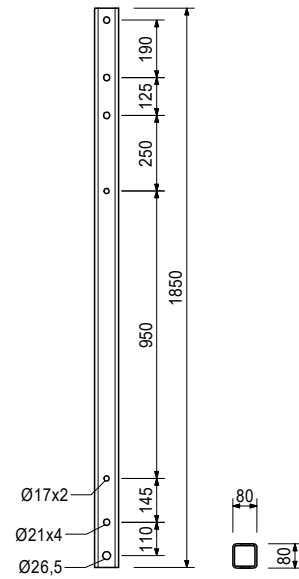
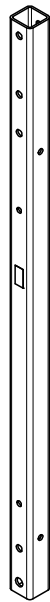
Consists of

1 pc 104477 Bolt ISO 4014 M20 x 120-8.8, galv.
1 pc 781053 Nut ISO 7040 M20-8, galv.

VCC Composite Formwork Carriage

Art no.	Weight [kg]	
126495	24.200	GUARDRAIL POST RCS MP

For fixation of the side protection on Material Platforms RCS-MP with horizontal Climbing Rail RCS.



Accessory (not included)

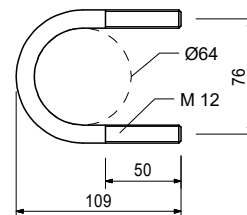
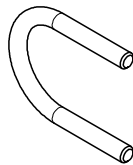
018060	0.014	COTTER PIN 4/1, GALV.
104031	0.462	FILLER PIN D=21X120
104477	0.300	HEX BOLT ISO4014 M20X120-8.8,G
781053	0.065	HEX NUT ISO7040-M20-8-VZ

Art no.	Weight [kg]	
110296	0.220	CLAMP A64 DIN 3570 M12, GALV.

For assembling Scaffold Tubes on Railing Posts RCS.

Notes

Wrench size SW 19.



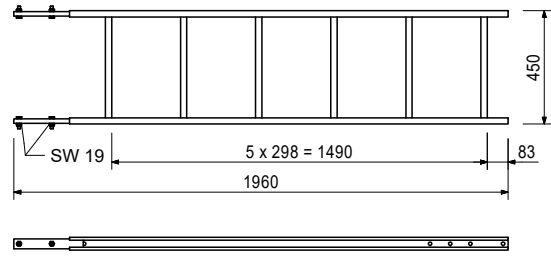
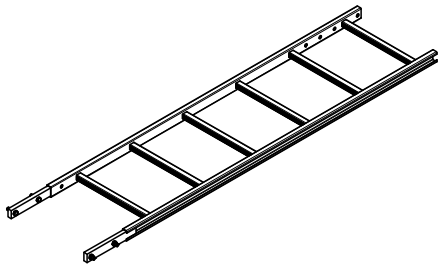
Accessory (not included)

710330	0.017	HEX NUT ISO4032-M12-8-VZ
--------	-------	---------------------------------

VCC Composite Formwork Carriage

Art no.	Weight [kg]	
051410	11.700	LADDER 180/6

For accessing PERI Formwork Systems.

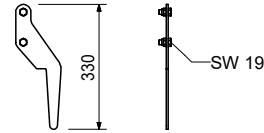


Consists of

- 4 pc 710224 Bolt ISO 4017 M12 x 40-8.8, galv.
- 4 pc 710381 Nut ISO 7042 M12-8, galv.

Art no.	Weight [kg]	
103718	0.684	LADDER HOOK

For adjusting the bottom ladder. Always use in pairs.

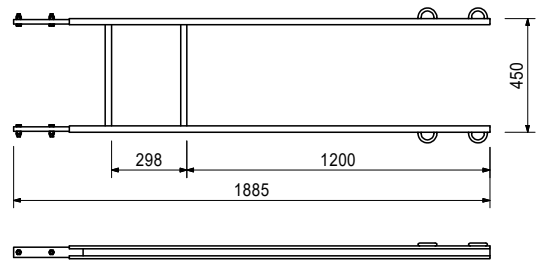
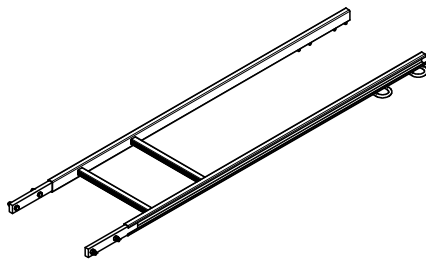


Consists of

- 2 pc 710266 Bolt ISO 4017 M12 x 25-8.8, galv.
- 2 pc 710381 Nut ISO 7042 M12-8, galv.

Art no.	Weight [kg]	
103724	10.400	END LADDER 180/2, CPL.

As access for PERI Formwork Systems.

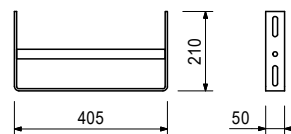
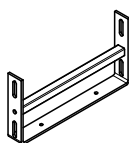


Consists of

- 4 pc 710224 Bolt ISO 4017 M12 x 40-8.8, galv.
- 4 pc 710381 Nut ISO 7042 M12-8, galv.

Art no.	Weight [kg]	
051460	2.180	LADDER BASE

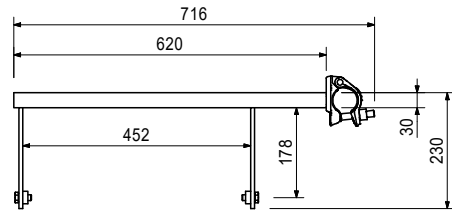
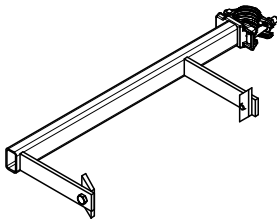
As bottom ladder connection and for securing ladders against sliding on the scaffold decks.



VCC Composite Formwork Carriage

Art no.	Weight [kg]	
104646	4.220	LADDER CONNECTOR HD 200

For connecting ladders to HD 200 Prop Sections.

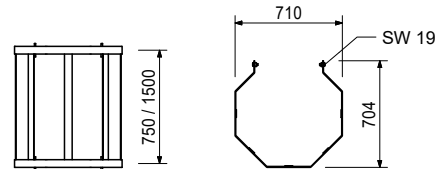
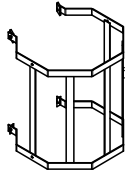


Consists of

- 2 pc 701763 Clamping Plate FI 25 x 10 x 90
- 1 pc 710266 Bolt ISO 4017 M12 x 25-8.8, galv.

Art no.	Weight [kg]	
		Ladder Cages, galv.
051450	25.200	LADDER SAFETY CAGE
104132	15.600	RAILING 75

Ladder cage for PERI ladder access.



Consists of

- 4 pc 701763 Clamping Plate FI 25 x 10 x 90
- 4 pc 710266 Bolt ISO 4017 M12 x 25-8.8, galv.

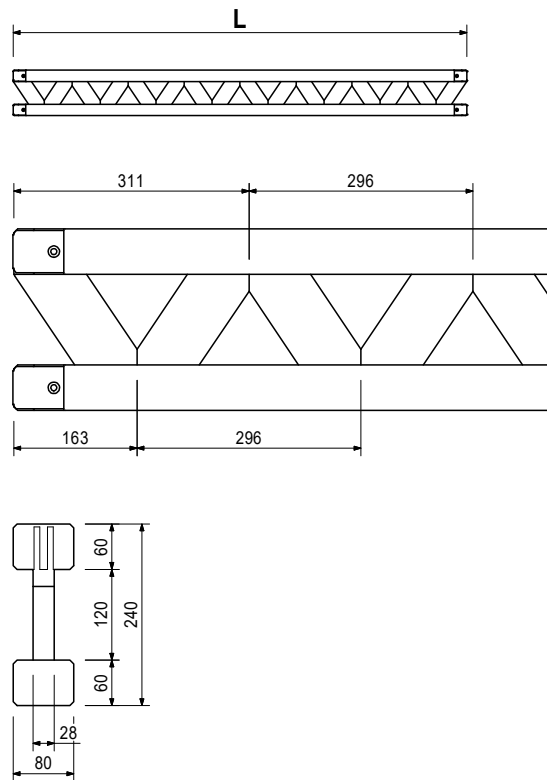
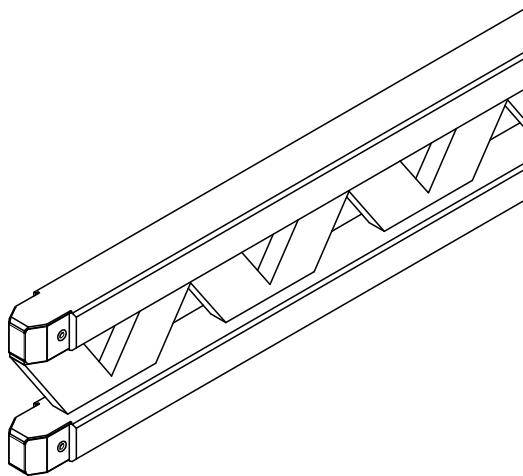
VCC Composite Formwork Carriage

Art no.	Weight [kg]		L [mm]
Formwork Girders GT 24			
075100	5.300	GIRDER GT 24, 90	918
075120	7.100	GIRDER GT 24, 120	1214
075150	8.900	GIRDER GT 24, 150	1510
075180	10.600	GIRDER GT 24, 180	1806
075210	12.400	GIRDER GT 24, 210	2102
075240	14.200	GIRDER GT 24, 240	2398
075270	15.900	GIRDER GT 24, 270	2694
075300	17.700	GIRDER GT 24, 300	2990
075330	19.500	GIRDER GT 24, 330	3286
075360	21.200	GIRDER GT 24, 360	3582
075390	23.000	GIRDER GT 24, 390	3878
075420	24.800	GIRDER GT 24, 420	4174
075450	26.600	GIRDER GT 24, 450	4470
075480	28.300	GIRDER GT 24, 480	4766
075510	30.100	GIRDER GT 24, 510	5062
075540	31.900	GIRDER GT 24, 540	5358
075570	33.600	GIRDER GT 24, 570	5654
075600	35.400	GIRDER GT 24, 600	5950

Universal formwork girder made of wood.

Notes

Special lengths possible via 078xxx numbers.



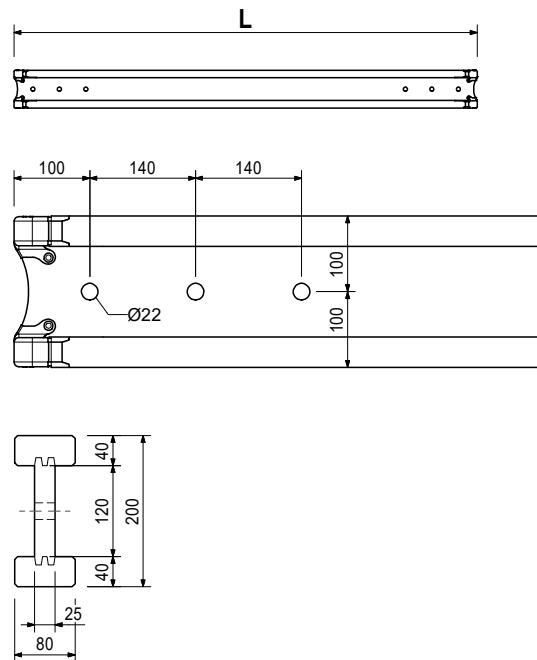
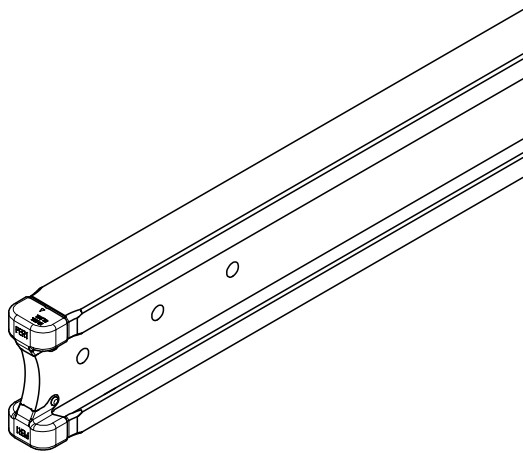
VCC Composite Formwork Carriage

Art no.	Weight [kg]		L [mm]
Girders VT 20K			
074905	12.010	PERI GIRDER VT 20K 215 CM	2152
074990	8.230	PERI GIRDER VT-20K 145 CM	1447
074910	13.630	PERI GIRDER VT-20K 245 CM	2452
074890	14.710	PERI GIRDER VT-20K 265 CM	2652
074920	16.060	PERI GIRDER VT-20K 290 CM	2902
074930	18.220	PERI GIRDER VT-20K 330 CM	3292
074940	19.840	PERI GIRDER VT-20K 360 CM	3592
074950	21.460	PERI GIRDER VT-20K 390 CM	3892
074960	24.700	PERI GIRDER VT-20K 450 CM	4492
074970	26.860	PERI GIRDER VT-20K 490 CM	4902
074980	32.260	PERI GIRDER VT-20K 590 CM	5902

Universal formwork girder made of wood.

Notes

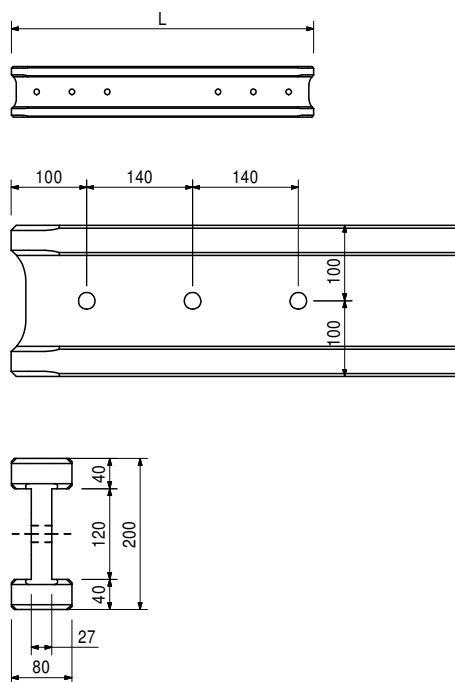
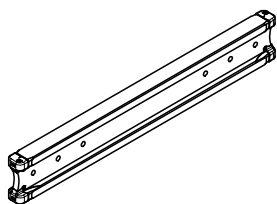
The girder fulfils all requirements of DIN EN 13377 class P20 (Declaration of Conformity).



Art no.	Weight [kg]	
074900	0.000	CUTTING COST FOR VT GIRDER

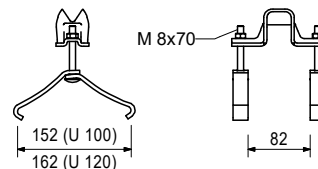
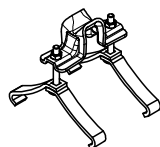
VCC Composite Formwork Carriage

Art no.	Weight [kg]		L [mm]
Girders VT 20 without Steel Cap			
073710	8.600	PERI GIRDER VT 20 145 CM	1445
073720	12.700	PERI GIRDER VT 20 215 CM	2150
073730	14.500	PERI GIRDER VT 20 245 CM	2450
073740	15.600	PERI GIRDER VT 20 265 CM	2650
073750	17.100	PERI GIRDER VT 20 290 CM	2900
073760	19.500	PERI GIRDER VT 20 330 CM	3290
073770	21.200	PERI GIRDER VT 20 360 CM	3590
073780	23.000	PERI GIRDER VT 20 390 CM	3890
073790	26.700	PERI GIRDER VT 20 450 CM	4490
073800	29.900	PERI GIRDER VT 20 490 CM	4900
073810	34.800	PERI GIRDER VT 20 590 CM	5900



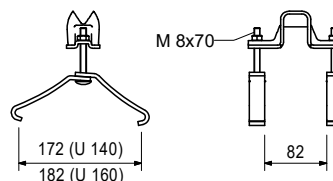
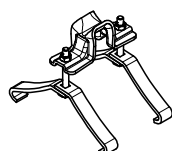
Art no.	Weight [kg]	
024070	0.691	HOOK STRAP HB 24-100/120

For fixing GT 24 Girders to Steel Walers SRZ, SRU and BR: U100 – U120.



Art no.	Weight [kg]	
024080	0.735	HOOK STRAP HB 24-140/160

For fixing GT 24 Girders to Steel Walers SRZ, SRU and BR: U140 – U160.



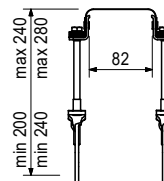
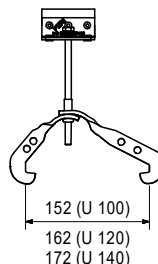
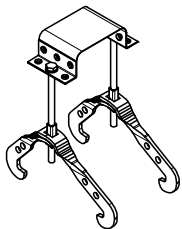
VCC Composite Formwork Carriage

Art no.	Weight [kg]	
		Hook Straps Uni HBU
103845	0.893	HOOK STRAP UNIVERSAL HBU 24-28
104931	0.839	UNIVERSAL HOOK STRAP HBU 20-24

For fixing GT 24 Girders or VT 20 Girders to Steel Walers SRZ and SRU Profiles U100 – U140.

Notes

The girders can be mounted at right-angles or diagonally to the steel walers and also outside of the nodes.



Accessory (not included)

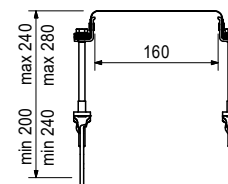
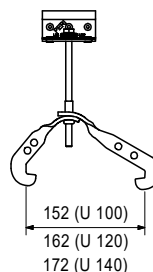
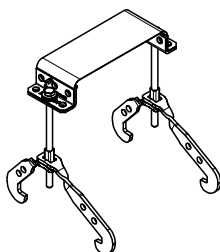
024540	0.005	TSS-TORX 6X40, GALV.
--------	-------	-----------------------------

Art no.	Weight [kg]	
		Hook Straps UNI Double HBUD
104096	0.912	HOOK STRAP UNIVERSAL DOUBLE HB
104930	0.887	UNIVER.HOOK STRAP DO. HBUD 20

For fixing two GT 24 Girders or VT 20 Girders to SRZ Steel Walers and SRU Profiles U100 – U140.

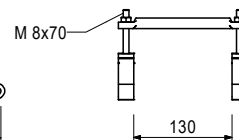
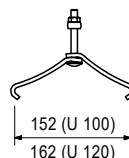
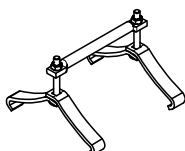
Notes

The girders can be mounted at right-angles or diagonally to the steel walers and also outside of the nodes.



Art no.	Weight [kg]	
024860	0.616	CROSS STRAP 150 FOR HB

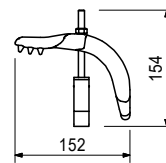
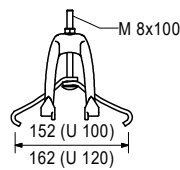
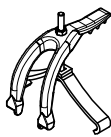
For fixing GT 24 Girders independent from girder node and timber beams to Steel Walers SRZ, SRU and BR: U100 – U120.



VCC Composite Formwork Carriage

Art no.	Weight [kg]	
024600	0.907	GIRDER CLAW HB

For mounting the GT 24 Edge Girder on the Steel Waler SRZ and SRU Profile U100 – U120.

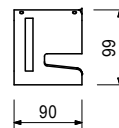
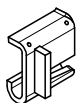


Art no.	Weight [kg]	
024640	0.923	QUICK STR.HOOK STRAP24-100/140

For fixing GT 24 Girders to Steel Waler SRZ, SRU, Profile U100 – U140 outside of the girder nodes.

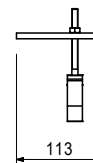
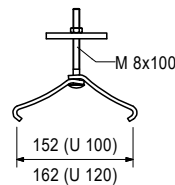
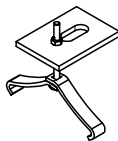
Notes

Girders fixed in position with the quick strap must be specially screwed to the formlining when using crane lifting gears.



Art no.	Weight [kg]	
024630	0.742	FIX STRAP FOR U100-U120, GALV.

For fixing the GT 24 Girder in the VARIO Corner.



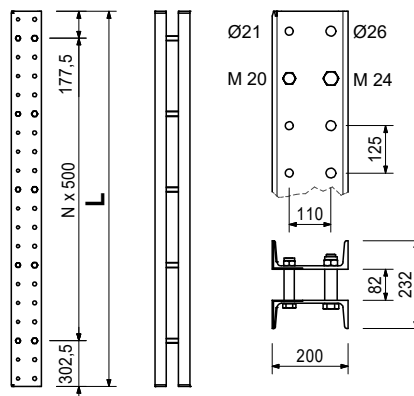
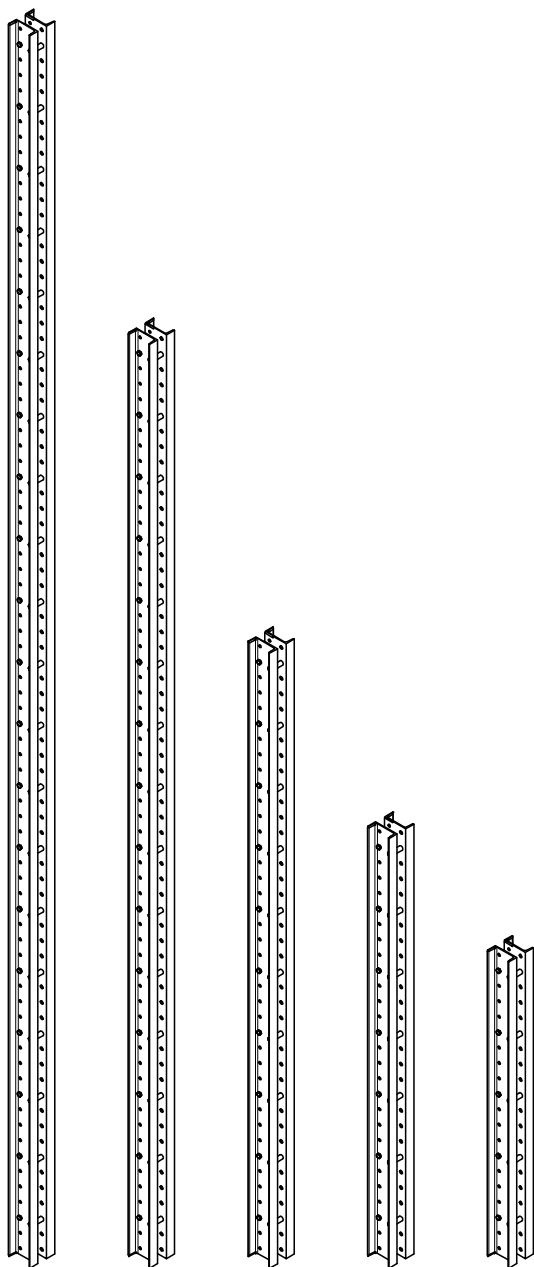
VCC Composite Formwork Carriage

Art no.	Weight [kg]		L [mm]
		Climbing Rails RCS	
114166	78.200	CLIMBING RAIL RCS 148	1480
109469	130.000	CLIMBING RAIL RCS 248	2480
112102	156.000	CLIMBING RAIL RCS 298	2980
109470	182.000	CLIMBING RAIL RCS 348	3480
112141	209.000	CLIMBING RAIL RCS 398	3980
109471	262.000	CLIMBING RAIL RCS 498	4980
109472	393.000	CLIMBING RAIL RCS 748	7480
109610	524.000	CLIMBING RAIL RCS 998	9980

Steel profile for all-purpose use of climbing application or civil constructions. With Spacers M20-82 and M24-82.

Notes

2 x U200 DIN 1026



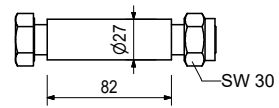
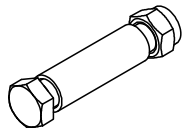
Accessory (not included)

136109	0.472	PIN SET RCS MAX
--------	-------	------------------------

VCC Composite Formwork Carriage

Art no.	Weight [kg]	
110022	0.491	SPACER M20-82

Spacer for Climbing Rails RCS.

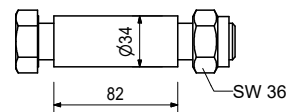
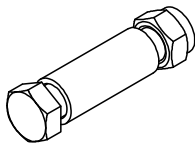


Consists of

- 1 pc 104477 Bolt ISO 4014 M20 x 120-8.8, galv.
- 1 pc 130341 Nut ISO 7042 M20-8, galv.

Art no.	Weight [kg]	
110023	0.910	SPACER M24-82

Spacer for Climbing Rails RCS.



Consists of

- 1 pc 109612 Bolt ISO 4014 M24 x 130-8.8, galv.
- 1 pc 130342 Nut ISO 7042 M24-8, galv.

Art no.	Weight [kg]		L [mm]
		Steel Walers Universal SRU U120	
123809	29.500	STEEL WALER SRU 117 U120	1172
103874	30.900	STEEL WALER SRU 122 U120	1222
103877	38.100	STEEL WALER SRU 147 U120	1472
103886	44.700	STEEL WALER SRU 172 U120	1722
125088	46.100	STEEL WALER SRU 177 U120	1772
103889	52.000	STEEL WALER SRU 197 U120	1972
103898	58.600	STEEL WALER SRU 222 U120	2222
123812	63.000	STEEL WALER SRU 237 U120	2372
103892	65.600	STEEL WALER SRU 247 U120	2472
103929	72.000	STEEL WALER SRU 272 U120	2722
103903	81.000	STEEL WALER SRU 297 U120	2972
103906	92.600	STEEL WALER SRU 347 U120	3472
103915	106.000	STEEL WALER SRU 397 U120	3972
103918	119.000	STEEL WALER SRU 447 U120	4472
103922	135.000	STEEL WALER SRU 497 U120	4972
103925	146.000	STEEL WALER SRU 547 U120	5472
103928	159.000	STEEL WALER SRU 597 U120	5972
103871	24.200	UNIV.STEEL WALER SRU 97 U120	972
103868	18.100	UNIV.STEEL WALING SRU 72 U120	722

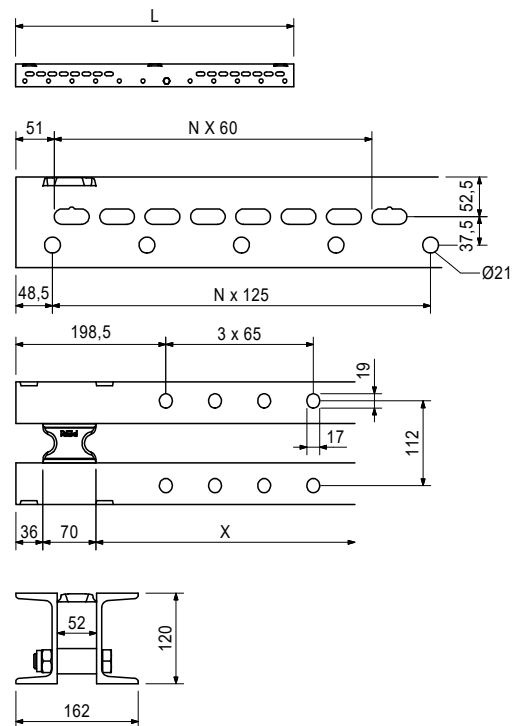
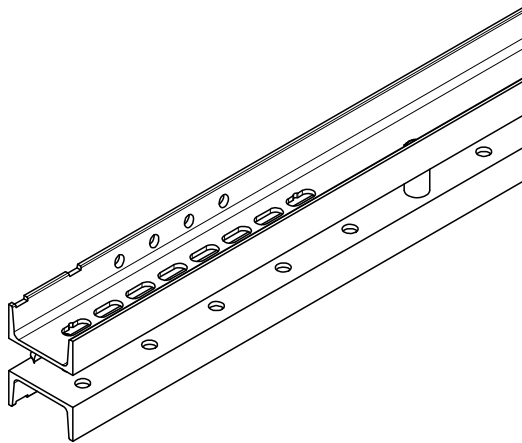
Universal Steel Waler Profile U120 used as waling for girder wall formwork and for diverse special applications. With adjustable spacers.

Notes

Permissible load: see PERI Design Tables.

SRU 120 $W_y = 121.4 \text{ cm}^3$, $l_y = 728 \text{ cm}$.

SRU 140 $W_y = 172,8 \text{ cm}^3$, $l_y = 1210 \text{ cm}$.



Accessory (not included)

135912	0.067	SRU SPACER
--------	-------	-------------------

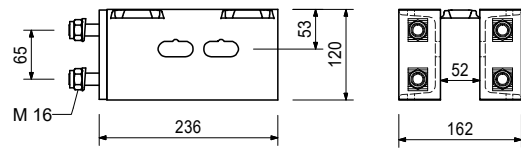
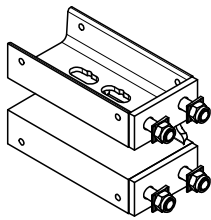
VCC Composite Formwork Carriage

Art no.	Weight [kg]	
104027	7.770	EXTENS.FOR VARIO 24 U120 COMPL

For assembly on Steel Waler SRU.

Notes

U120: $W_y = 121.4 \text{ cm}^3$, $I_y = 728 \text{ cm}^4$.



Consists of

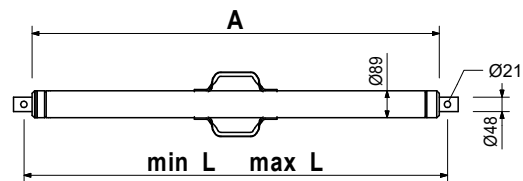
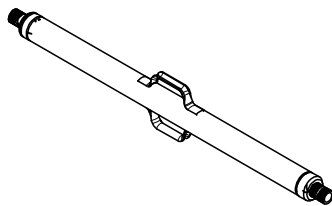
- 4 pc 070890 Nut ISO 7040 M16-8, galv.
- 4 pc 710252 Bolt ISO 4017 M16 x 50-8.8, galv.
- 4 pc 710880 Washer DIN 434 18, galv.

Art no.	Weight [kg]		min. L [mm]	max. L [mm]
		Heavy-Duty Spindles SLS		
111035	12.000	HEAVY DUTY SPINDLE SLS 40/ 80	400	800
101773	15.300	HEAVY DUTY SPINDLE SLS 80/140	800	1400
101774	18.300	HEAVY DUTY SPINDLE SLS 100/180	1000	1800
101776	24.900	HEAVY DUTY SPINDLE SLS 140/240	1400	2400
101778	32.300	HEAVY DUTY SPINDLE SLS 200/300	2000	3000
101779	38.500	HEAVY DUTY SPINDLE SLS 260/360	2600	3600
109726	44.800	HEAVY DUTY SPINDLE SLS 320/420	3200	4200
109785	51.000	HEAVY DUTY SPINDLE SLS 380/480	3800	4800

Used as adjustable spindle for truss beams made of Steel Walers SRU and Climbing Rails RCS.

Notes

Permissible load see PERI Design Tables.



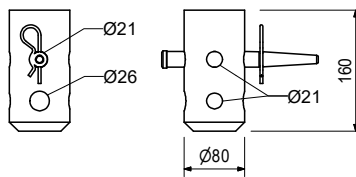
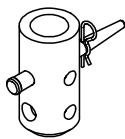
Accessory (not included)

018060	0.014	COTTER PIN 4/1, GALV.
104031	0.462	FILLER PIN D=21X120
110477	3.990	SPINDLE ADAPTOR SLS/RCS

VCC Composite Formwork Carriage

Art no.	Weight [kg]	
110477	3.990	SPINDLE ADAPTOR SLS/RCS

For connecting the Heavy-Duty Spindle SLS to the Climbing Rail RCS.



Accessory (not included)

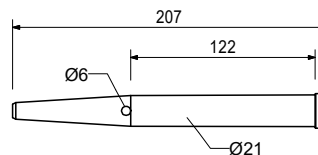
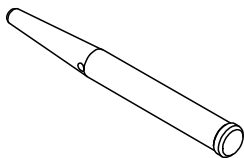
018060	0.014	COTTER PIN 4/1, GALV.
022230	0.033	COTTER PIN 5/1, GALV.
104031	0.462	FILLER PIN D=21X120
111567	0.729	PIN D=26X120

Consists of

- 1 pc 018060 Cotter Pin 4/1, galv.
- 1 pc 104031 Fitting Pin Ø 21 x 120

Art no.	Weight [kg]	
104031	0.462	FILLER PIN D=21X120

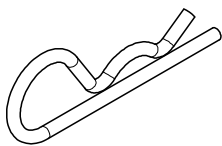
For different connections.



Accessory (not included)

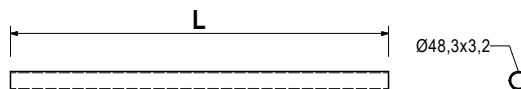
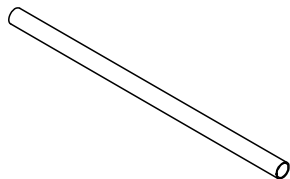
018060	0.014	COTTER PIN 4/1, GALV.
--------	-------	------------------------------

Art no.	Weight [kg]	
018060	0.014	COTTER PIN 4/1, GALV.



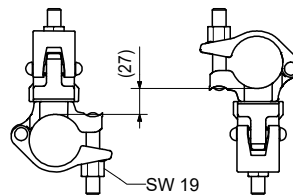
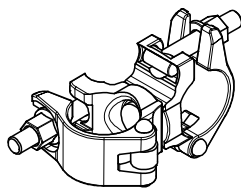
VCC Composite Formwork Carriage

Art no.	Weight [kg]		L [mm]
Steel Scaffold Tubes Ø 48.3			
026417	0.000	CUTTING COST SCAFFOLD TUBE	1
026411	3.550	SCAFFOLD TUBE 48,3x3,2 L=1,0M	1000
026412	7.100	SCAFFOLD TUBE 48,3x3,2 L=2,0M	2000
026413	10.650	SCAFFOLD TUBE 48,3x3,2 L=3,0M	3000
026414	14.200	SCAFFOLD TUBE 48,3x3,2 L=4,0M	4000
026419	17.750	SCAFFOLD TUBE 48,3X3,2 L=5,0M	5000
026418	21.600	SCAFFOLD TUBE 48,3x3,2 L=6,0M	6000
026415	3.550	SCAFFOLD TUBE 48,3x3,2 LFM	1000
125976	8.900	SCAFF TUBE 48,3X3,2X2500, GALV	2500
114287	12.500	SCAFF TUBE 48,3X3,2X3500, GALV	3500



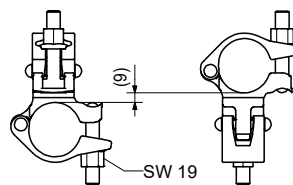
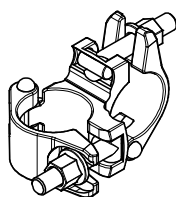
Art no.	Weight [kg]	
017010	1.400	SWIVEL COUPLER SW 48/48 GALV.

For scaffold tubes Ø 48 mm.



Art no.	Weight [kg]	
017020	1.120	STANDARD COUPLER RA 48/48 GALV

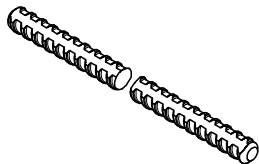
For scaffold tubes Ø 48 mm.



Art no.	Weight [kg]	
		Tie Rods DW 15
030005	0.720	DYWIDAG TIE ROD DW15 0.50M
030010	1.230	DYWIDAG TIE ROD DW15 0.85M
030480	1.440	DYWIDAG TIE ROD DW15 1.00M
030490	1.730	DYWIDAG TIE ROD DW15 1.20M
030170	2.160	DYWIDAG TIE ROD DW15 1.50M
030020	2.450	DYWIDAG TIE ROD DW15 1.70M
030180	2.880	DYWIDAG TIE ROD DW15 2.00M
030710	3.600	DYWIDAG TIE ROD DW15 2.50M
030720	4.320	DYWIDAG TIE ROD DW15 3.00M
030730	5.040	DYWIDAG TIE ROD DW15 3.50M
030160	8.640	DYWIDAG TIE ROD DW15 6.00M
030050	0.000	TIE ROD DW15 CUTTING COST
030030	1.440	TIE ROD DW15 SPEC LENGTH

Notes

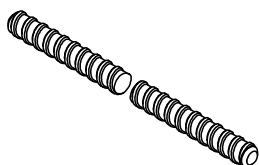
Non-weldable! Observe the permissions!
Permissible tension force 90 kN.



Art no.	Weight [kg]	
		Tie Rods B 15
030150	0.420	TIE ROD B15 L=0.30M
030740	1.550	TIE ROD B15 SPEC LENGTH
030050	0.000	TIE ROD DW15 CUTTING COST

Notes

Weldable! Observe the permissions!
Permissible tension force 82 kN.

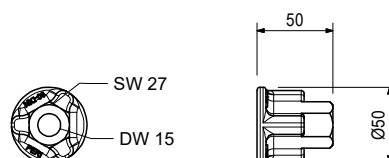
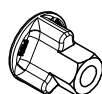


Art no.	Weight [kg]	
030130	0.318	CAM NUT DW15, COAT

For anchoring with Tie Rod DW 15 and B 15.

Notes

Permissible load 90 kN.



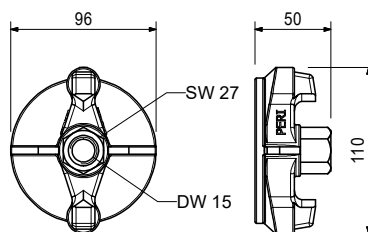
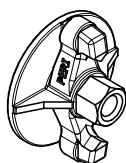
VCC Composite Formwork Carriage

Art no.	Weight [kg]	
030110	0.799	WINGNUT COUNTERPLATE DW15, G.

For anchoring with Tie Rod DW 15 and B 15.

Notes

Permissible load 90 kN.

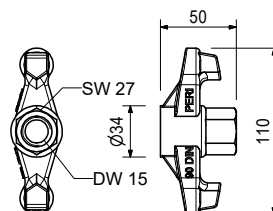


Art no.	Weight [kg]	
030100	0.439	WINGNUT DW15, GALV.

For anchoring with Tie Rod DW 15 and B 15.

Notes

Permissible load 90 kN.



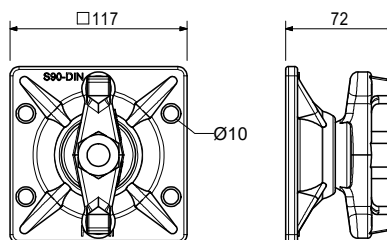
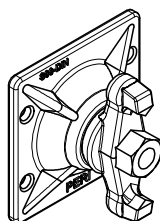
Art no.	Weight [kg]	
030370	1.660	WINGNUT PIVOT PLATE DW15 GALV

For anchoring with Tie Rod DW 15 and B 15. With articulated, captive nut. Maximum inclination of anchor: 8°.

Notes

Width across flats SW 27.

Permissible load 90 kN.

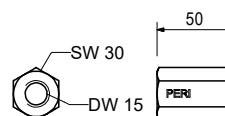


Art no.	Weight [kg]	
030070	0.222	HEX NUT DW15 SW 30/50, GALV.

For anchoring with Tie Rod DW 15 and B 15.

Notes

Permissible load 90 kN.



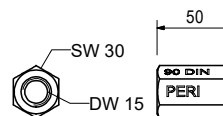
VCC Composite Formwork Carriage

Art no.	Weight [kg]	
030550	0.233	HEX NUT DW15 SW 30/50 WELDABLE

For anchoring with Tie Rod DW 15 and B 15.

Notes

Weldable!
Permissible load 90 kN.

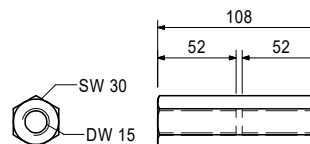
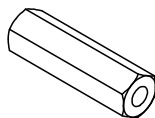


Art no.	Weight [kg]	
030090	0.402	HEX NUT DW15 SW 30/108, GALV.

For coupling Tie Rod DW 15 and B 15.

Notes

Permissible load 90 kN.

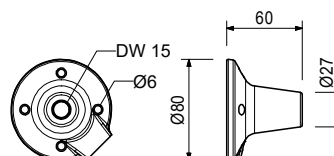
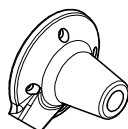


Art no.	Weight [kg]	
030840	0.515	THREADED PLATE DW15

For use with Tie Rod DW 15 or B 15. For anchoring in concrete.

Notes

Lost anchor part.

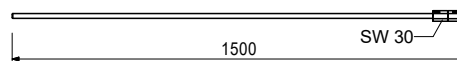
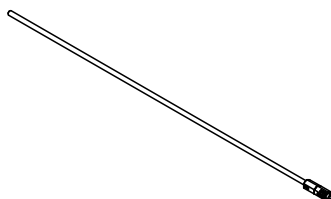


Art no.	Weight [kg]	
110797	2.790	TENSION ROD 15 SRU L=1,50M

Suitable for Strut SRU I = 1.65 - 2.40 m, item no. 110765 and the Spacer Tube DW 15-550 VARIOKIT.

Notes

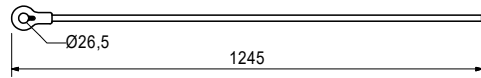
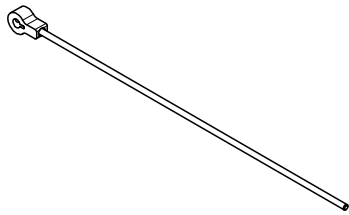
Permissible load 85 kN.



VCC Composite Formwork Carriage

Art no.	Weight [kg]	
115538	3.190	TIE YOKE ANKER ROD VARIOKIT

For anchoring tensionloads of the consol brackets.

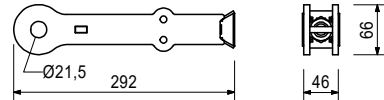
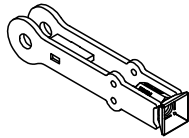


Accessory (not included)

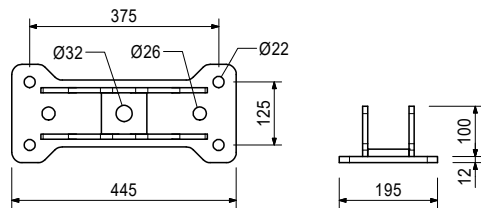
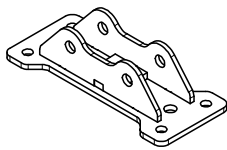
022230	0.033	COTTER PIN 5/1, GALV.
111567	0.729	PIN D=26X120

Art no.	Weight [kg]	
116532	1.890	TIE YOKE VARIOKIT D=22/DW15

For assembling in Steel Waler SRU.

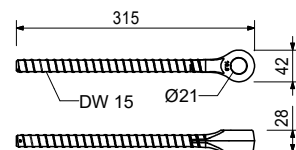


Art no.	Weight [kg]	
137527	10.500	BRACING SHOE VARIOKIT



Art no.	Weight [kg]	
037150	0.641	TIE YOKE DW15

For fixing SRZ Steel Walers to the strongback.



Accessory (not included)

037160	0.736	RAPID LOCKING PIN 20X205, G.
710226	0.340	HEX BOLT ISO4014-M20X090-8.8VZ
781053	0.065	HEX NUT ISO7040-M20-8-VZ

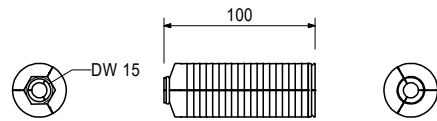
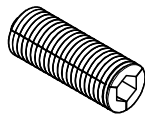
VCC Composite Formwork Carriage

Art no.	Weight [kg]	
108795	0.450	ROCK ANCHOR HB DW 15

For subsequent anchoring with DW 15 tie rods. Diameter of drilled hole 36.5 - 38 mm.

Notes

Follow Instructions for Use!
Permissible load 90 kN.

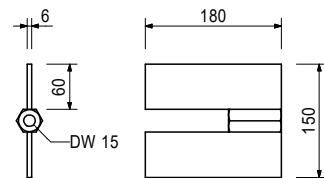
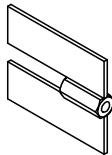


Art no.	Weight [kg]	
031300	1.350	WELD ON ANCHOR DW15

For anchoring single-sided formwork.

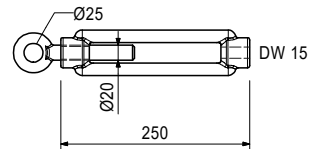
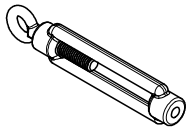
Notes

Permissible tension force 90 kN.



Art no.	Weight [kg]	
116807	1.850	TURNBUCKLE CB D=25 M20/DW15

For tensioning of Tie Rod DW 15.



Consists of

- 1 pc 711059 Turnbuckle for tension anchor CB
- 1 pc 711060 Eye Bolt M20, left, galv.

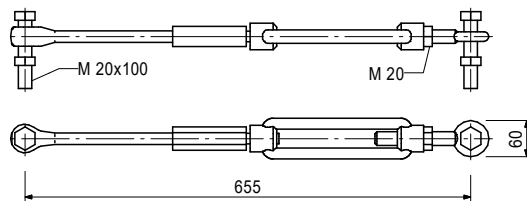
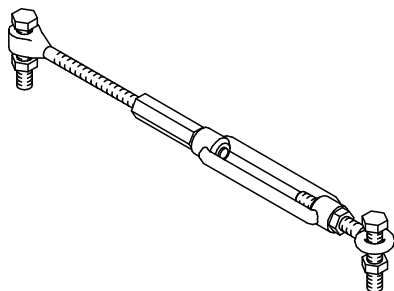
VCC Composite Formwork Carriage

Art no.	Weight [kg]	
057083	3.820	BRACING DW15 ACS

For bracing scaffolds. For bracing large VARIO GT 24 Elements.

Notes

Tie Rod DW 15 must be ordered separately transport dimension 655.



Accessory (not included)

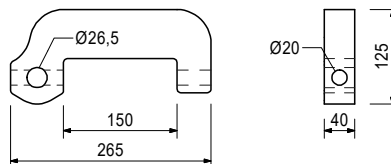
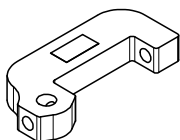
030030	1.440	TIE ROD DW15 SPEC LENGTH
030050	0.000	TIE ROD DW15 CUTTING COST

Consists of

- 2 pc 024910 Bolt ISO 4014 M20 x 100-8.8, galv.
- 1 pc 030090 Hex. Nut DW 15 SW 30/108, galv.
- 1 pc 037150 Tie Yoke DW 15
- 1 pc 057263 Nut ISO 4032 M20-8, galv. left
- 1 pc 701335 Stess Steel DW 15x0.10m
- 2 pc 710334 Nut ISO 4032 M20-8, galv.
- 1 pc 711059 Turnbuckle for tension anchor CB
- 1 pc 711060 Eye Bolt M20, left, galv.

Art no.	Weight [kg]	
115375	6.100	ARTICULATED SPANNER RCS DW

For tensioning and as an articulated connection to the Climbing Rail RCS, Steel Waler SRU or Bracing Shoe RCS for bracing with DW 15.



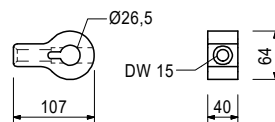
Accessory (not included)

018060	0.014	COTTER PIN 4/1, GALV.
022230	0.033	COTTER PIN 5/1, GALV.
030030	1.440	TIE ROD DW15 SPEC LENGTH
030070	0.222	HEX NUT DW15 SW 30/50, GALV.
104031	0.462	FILLER PIN D=21X120
111567	0.729	PIN D=26X120

VCC Composite Formwork Carriage

Art no.	Weight [kg]	
115378	1.080	EYE NUT RCS DW15

As an articulated connection to the Climbing Rail RCS, Steel Waler SRU for bracing with DW 15.

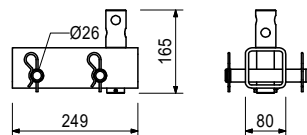
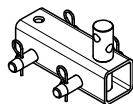


Accessory (not included)

018060	0.014	COTTER PIN 4/1, GALV.
022230	0.033	COTTER PIN 5/1, GALV.
104031	0.462	FILLER PIN D=21X120
111567	0.729	PIN D=26X120

Art no.	Weight [kg]	
123534	5.910	BRACE CONNECTOR RCS DW15/M20

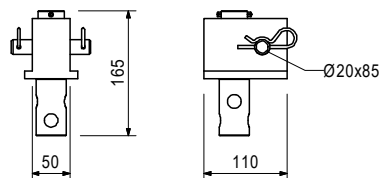
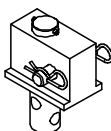
For mounting diagonal bracing with Tie Rod DW 15 and a compression strut to the Climbing Rail RCS.



Consists of

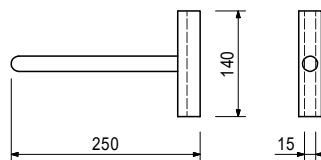
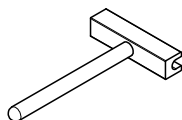
4 pc 018060 Cotter Pin 4/1, galv.
2 pc 710894 Pin Ø 25 x 180, geomet.

Art no.	Weight [kg]	
117766	4.450	BRACING CONNECTOR SRU/DW15



Art no.	Weight [kg]	
031070	1.260	TIE ROD WRENCH 15

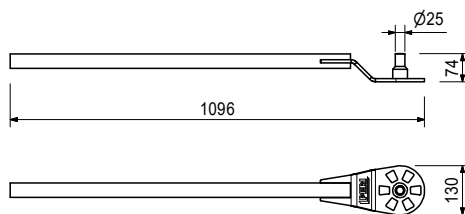
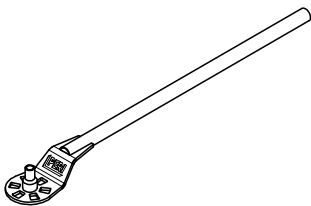
For easy handling of Tie Rod DW 15.



VCC Composite Formwork Carriage

Art no.	Weight [kg]	
108129	3.480	TIE SPANNER DW 15

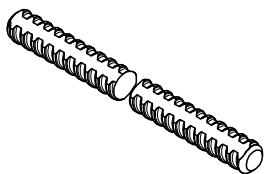
For Wingnut Counterplate DW 15, Wingnut Pivot Plate DW 15 and Wingnut DW 15.



Art no.	Weight [kg]	
		Tie Rods DW 20
030800	0.000	DYW.TIE ROD DW20 CUTTING COST
030640	1.280	TIE ROD 0.50 M DW 20
030680	15.400	TIE ROD 6.00M DW 20
030641	2.560	TIE ROD DW 20, L=1.0M
030700	2.560	TIE ROD DW20 SPEC LENGTH

Notes

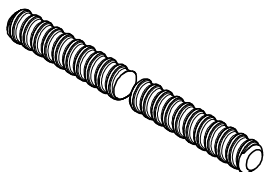
Non-weldable! Take official Approval into consideration!
Permissible tension force 150 kN.



Art no.	Weight [kg]	
		Tie Rods B 20
030800	0.000	DYW.TIE ROD DW20 CUTTING COST
030745	2.600	TIE ROD B20 SPEC LENGTH

Notes

Weldable! Take official Approval into consideration!
Permissible tension force 150 kN.



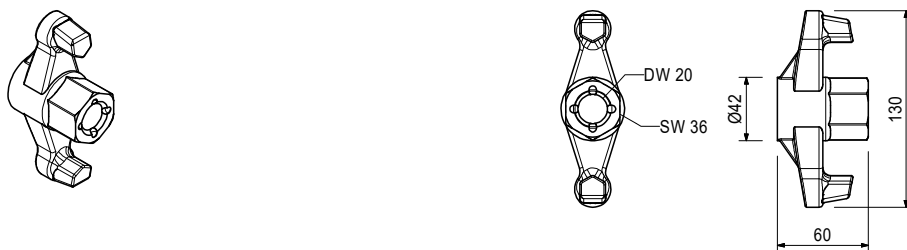
VCC Composite Formwork Carriage

Art no.	Weight [kg]	
030990	0.786	WING NUT DW20, GALV.

For anchoring with Tie Rod DW 20 and B 20.

Notes

Permissible load 150 kN.

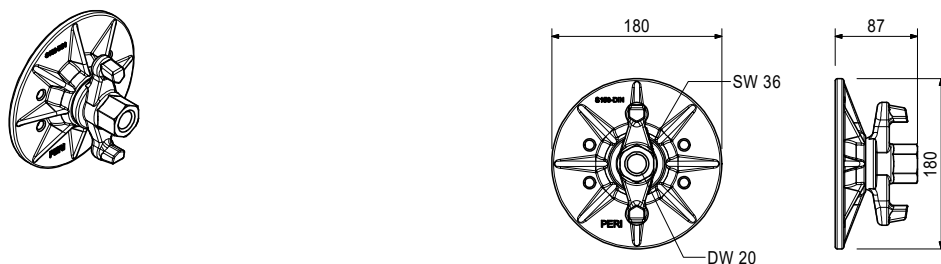


Art no.	Weight [kg]	
127587	3.210	WINGNUT PIVOT PLATE DW20 , G.

For anchoring with Tie Rod DW 20. With pivoting captive nut. Maximum angle of tilting +/- 8°.

Notes

Permissible load 150 kN.



Art no.	Weight [kg]	
030580	0.371	HEX NUT SW 36/60 WELDABLE DW20

For anchoring with Tie Rod DW 20 and B 20.

Notes

Weldable!
Permissible load 150 kN.



Art no.	Weight [kg]	
030590	0.685	HEX NUT SW 36/110 WELDABLE DW20

For coupling Tie Rod DW 20 and B 20.

Notes

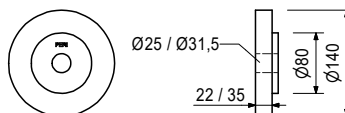
Weldable!
Permissible load 150 kN.



VCC Composite Formwork Carriage

Art no.	Weight [kg]	
114082	2.860	COUNTERPLATE RCS DW20

Counterplate with centring for anchoring through the Climbing Rail RCS.

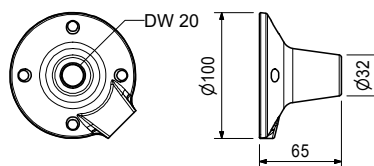
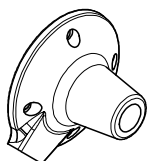


Art no.	Weight [kg]	
030860	0.792	THREADED ANCHOR PLATE DW20

For use with Tie Rod DW 20, B 20 or Screw-On Cone-2 M24/DW 20. For anchoring in concrete.

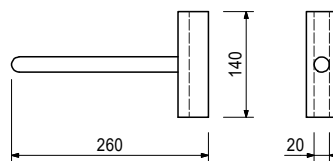
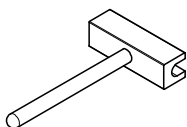
Notes

Lost anchor component.



Art no.	Weight [kg]	
031050	1.780	TIE ROD WRENCH 20

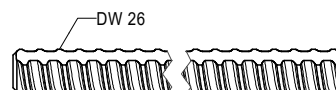
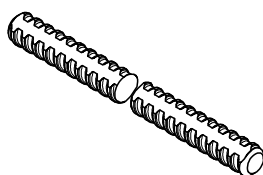
For easy handling of Tie Rod DW 20.



Art no.	Weight [kg]	
		Tie Rods DW 26
030500	0.000	DYW.TIE ROD DW26 CUTTING COST
030645	2.240	TIE ROD 0.50 M DW 26
030690	26.900	TIE ROD 6.00M DW 26
030646	4.480	TIE ROD DW 26, L=1.00M
030340	4.480	TIE ROD DW26 SPEC LENGTH

Notes

Non-weldable! Take official approval into consideration!
Permissible tension force 250 kN.



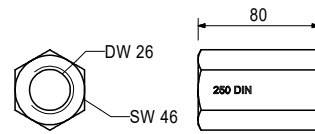
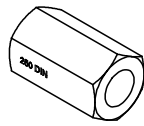
VCC Composite Formwork Carriage

Art no.	Weight [kg]	
030970	0.790	HEX NUT DW26 SW 46/80 WELDABLE

For anchoring with Tie Rod DW 26.

Notes

Weldable!
Permissible load 250 kN.

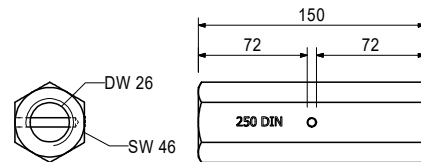
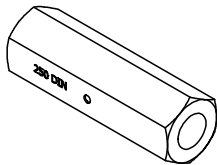


Art no.	Weight [kg]	
030980	1.540	HEX NUT DW26 SW 46/150 WELDABLE

For coupling Tie Rod DW 26.

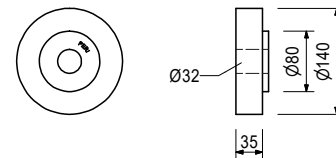
Notes

Weldable!
Permissible load 250 kN.



Art no.	Weight [kg]	
114084	4.280	COUNTERPLATE RCS DW26

Counterplate with centring for anchoring through the Climbing Rail RCS.



Art no.	Weight [kg]	
030870	1.260	THREADED ANCHOR PLATE DW26

For use with Tie Rod DW 26 or Screw-On Cone M36/DW 26. For anchoring in concrete.

Notes

Lost anchor part.

