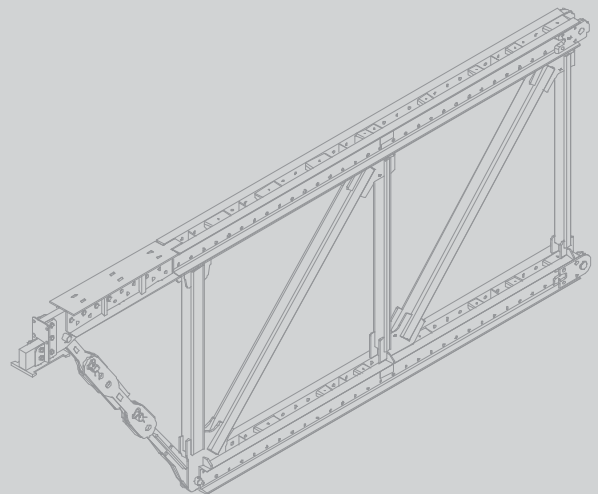


Product Catalogue

VRB Truss Girder



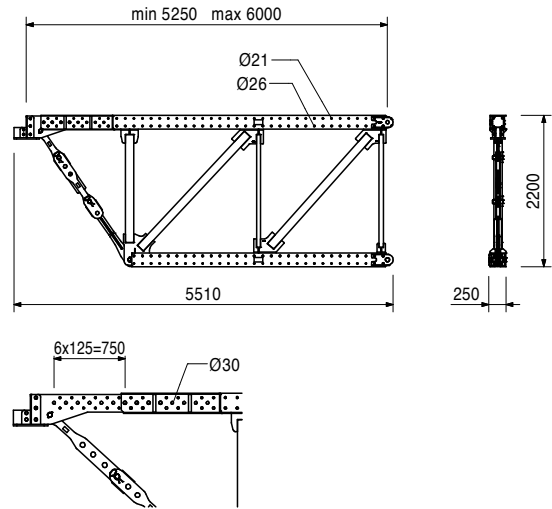
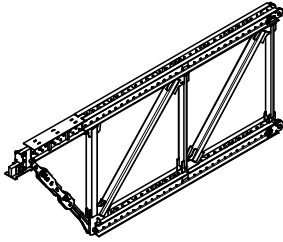
Item no.	Weight kg
128086	1120.000

Bearing Frame 5.25 m VRB

Functional dimension: 5.25 m - 6.00 m.
Frame for the upper chord support on the Main Beam.

Complete with

- 1 pc. 125355 Bolt \varnothing 50 x 250, VRB
- 4 pc. 125356 Cotter PIN 6/1 \varnothing 50, VRB
- 4 pc. 113626 Bolt \varnothing 50 x 155
- 4 pc. 018060 Cotter Pin 4/1, galv.
- 4 pc. 125347 Fitting Pin \varnothing 30, VRB



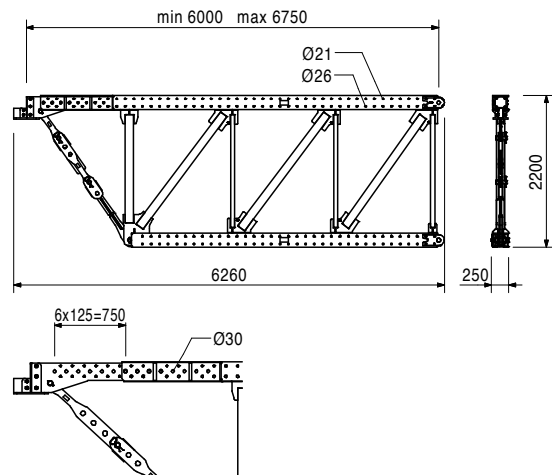
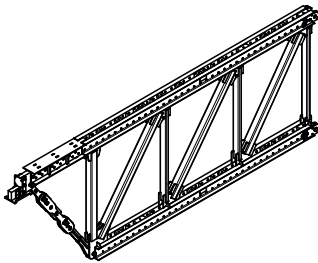
126578	1300.000
--------	----------

Bearing Frame 6.0 m VRB

Functional dimension: 6.00 m - 6.75 m.
Frame for the upper chord support on the Main Beam.

Complete with

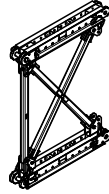
- 1 pc. 125355 Bolt \varnothing 50 x 250, VRB
- 4 pc. 125356 Cotter PIN 6/1 \varnothing 50, VRB
- 4 pc. 113626 Bolt \varnothing 50 x 155
- 4 pc. 018060 Cotter Pin 4/1, galv.
- 4 pc. 125347 Fitting Pin \varnothing 30, VRB



Item no.	Weight kg
125153	401.000

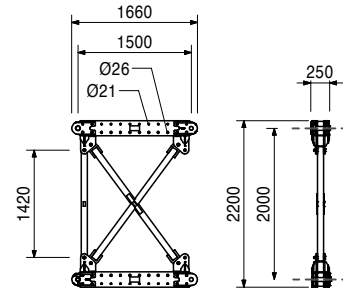
Coupling Joint Frame 1.5 m VRB

Frame for high shear forces, for bottom chord support of coupling joint suspensions.



Complete with

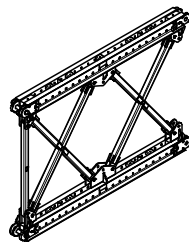
- 1 pc. 125413 Pressure Pole Starter VRB
- 1 pc. 125409 Diagonal Bracing 1.5 m VRB
- 2 pc. 125405 Chord 1.5 m VRB, coat
- 2 pc. 125355 Bolt \varnothing 50 x 250, VRB
- 2 pc. 125356 Cotter PIN 6/1 \varnothing 50, VRB
- 4 pc. 125347 Fitting Pin \varnothing 30, VRB
- 4 pc. 018060 Cotter Pin 4/1, galv.



125154	675.000
--------	---------

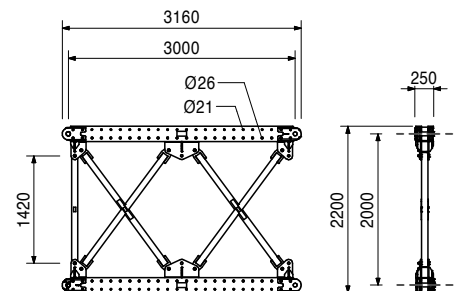
Coupling Joint Frame 3.0 m VRB

Frame for high shear forces, for bottom chord support of coupling joint suspensions.



Complete with

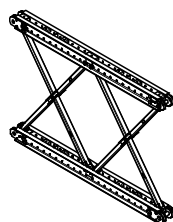
- 1 pc. 125413 Pressure Pole Starter VRB
- 2 pc. 125409 Diagonal Bracing 1.5 m VRB
- 2 pc. 125419 Chord 3,0 m, coat
- 2 pc. 125355 Bolt \varnothing 50 x 250, VRB
- 2 pc. 125356 Cotter PIN 6/1 \varnothing 50, VRB
- 8 pc. 125347 Fitting Pin \varnothing 30, VRB
- 8 pc. 018060 Cotter Pin 4/1, galv.



127285	501.000
--------	---------

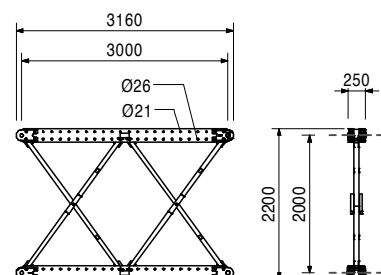
Standard Frame 3.0 m VRB

Frame for high bending moment loads.



Complete with

- 2 pc. 127284 Chord 3,0 m, coat
- 2 pc. 125371 Diagonal Pole Interrupted VRB
- 2 pc. 125381 Diagonal Pole Continuous VRB
- 2 pc. 125355 Bolt \varnothing 50 x 250, VRB
- 2 pc. 125356 Cotter PIN 6/1 \varnothing 50, VRB
- 4 pc. 125345 Fitting Pin \varnothing 26 x 105, VRB
- 4 pc. 125351 Fitting Pin \varnothing 26 SR, VRB
- 8 pc. 018060 Cotter Pin 4/1, galv.



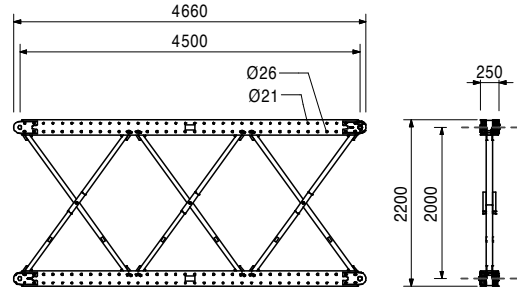
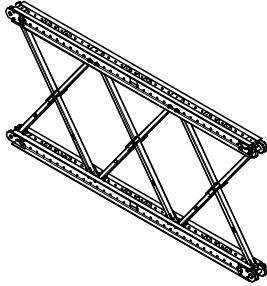
Item no.	Weight kg
125155	708.000

Standard Frame 4.5 m VRB

Frame for high bending moment loads.

Complete with

- 2 pc. 125379 Chord 4.5 m VRB, coat
- 2 pc. 125356 Cotter PIN 6/1 Ø 50, VRB
- 3 pc. 125371 Diagonal Pole Interrupted VRB
- 3 pc. 125381 Diagonal Pole Continuous VRB
- 2 pc. 125355 Bolt Ø 50 x 250, VRB
- 4 pc. 125351 Fitting Pin Ø 26 SR, VRB
- 8 pc. 125345 Fitting Pin Ø 26 x 105, VRB
- 12 pc. 018060 Cotter Pin 4/1, galv.



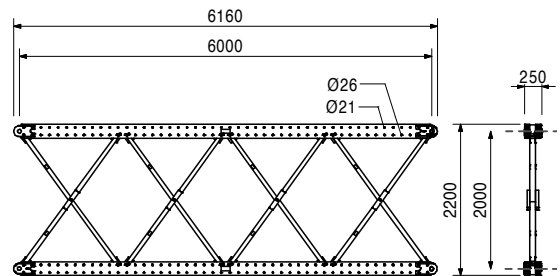
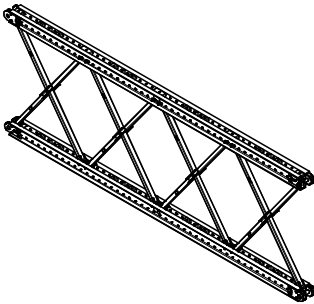
125156	915.000
--------	---------

Standard Frame 6.0 m VRB

Frame for high bending moment loads.

Complete with

- 4 pc. 125371 Diagonal Pole Interrupted VRB
- 4 pc. 125381 Diagonal Pole Continuous VRB
- 2 pc. 125387 Chord 6 m, coat
- 2 pc. 125355 Bolt Ø 50 x 250, VRB
- 2 pc. 125356 Cotter PIN 6/1 Ø 50, VRB
- 4 pc. 125351 Fitting Pin Ø 26 SR, VRB
- 12 pc. 125345 Fitting Pin Ø 26 x 105, VRB
- 16 pc. 018060 Cotter Pin 4/1, galv.



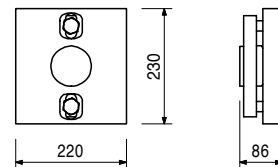
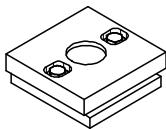
127136	25.200
--------	--------

Cross Fall Bearing VRB

For supporting the Bearing Frames on the yoke when the Main Beam is inclined transversely > 0% - 7%.

Complete with

- 2 pc. 111137 Hex Bolt ISO4017 M20 x 55-8.8, galv.



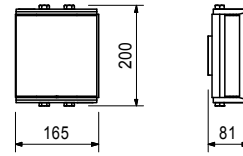
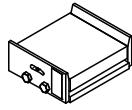
Item no.	Weight kg
127143	12.200

Longitudinal Bearing VRB

For supporting the Bearing Frames on the Main Beam from 0% - 7% longitudinal inclination.

Complete with

4 pc. 710266 Bolt ISO 4017 M12 x 25-8.8, galv.
2 pc. 710417 Sleeve ISO 8752-06, 0 x 025,galv.



Accessories

128019	13.500
--------	--------

Centering Plate HDT - VRB

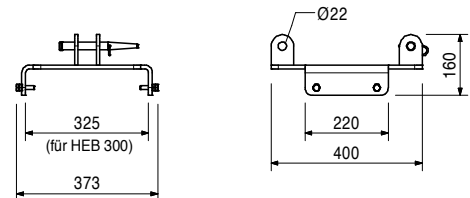
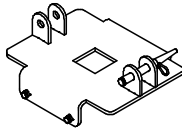
128019	13.500
--------	--------

Centering Plate HDT - VRB

For centring the Longitudinal Bearing VRB on the Main Beam and for pulling out the Truss Girder from the side during disassembly.

Complete with

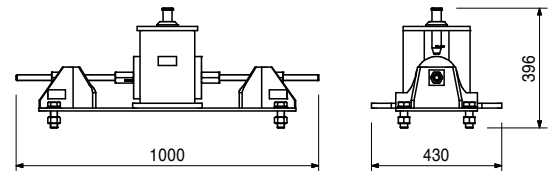
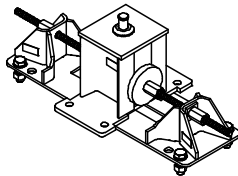
1 pc. 104031 Fitting Pin \varnothing 21 x 120
1 pc. 018060 Cotter Pin 4/1, galv.
4 pc. 710328 Hex.Bolt ISO 4017 M10x40-8.8, galv.



131852	63.300
--------	--------

Horizontal Bearing-2 VRB

For deriving horizontal forces of the entire system into the Main Beam.



Accessories

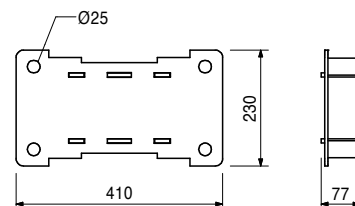
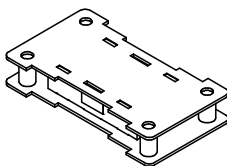
131031	10.100
--------	--------

Cross Fall Adaptor VRB

131031	10.100
--------	--------

Cross Fall Adaptor VRB

For the height compensation at the Horizontal Bearing-2 VRB when using Cross Fall Bearing VRB.



Accessories

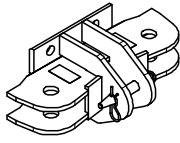
131852	63.300
--------	--------

Horizontal Bearing-2 VRB

Item no.	Weight kg
125764	15.000

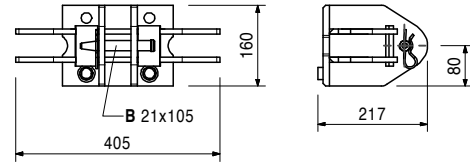
Bracing Shoe VRB

Connection for the horizontal bracing on the top chord of the truss package.



Complete with

1 pc. 125349 Fitting Pin \varnothing 21 x 105, VRB
1 pc. 018060 Cotter Pin 4/1, galv.



Accessories

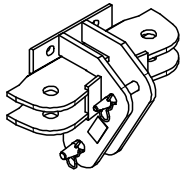
711084	0.420
781053	0.065

Bolt ISO 4014 M20 x 150-8.8, galv.
Nut ISO 7040 M20-8, galv.

125770	17.900
--------	--------

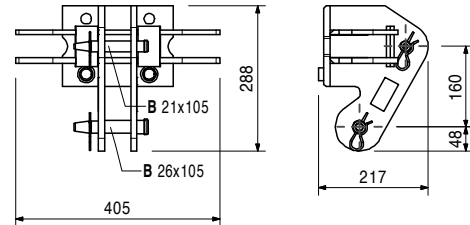
Vertical Bracing Shoe VRB

Connection for the horizontal and vertical bracing on the upper and lower chord of the truss package.



Complete with

1 pc. 125345 Fitting Pin \varnothing 26 x 105, VRB
2 pc. 018060 Cotter Pin 4/1, galv.
1 pc. 125349 Fitting Pin \varnothing 21 x 105, VRB



Accessories

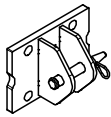
711084	0.420
781053	0.065

Bolt ISO 4014 M20 x 150-8.8, galv.
Nut ISO 7040 M20-8, galv.

125732	5.190
--------	-------

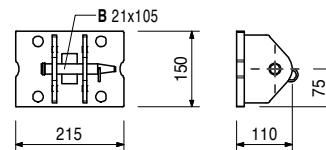
Coupling Shoe VRB

Connection for coupling single trusses to the truss package.



Complete with

1 pc. 125349 Fitting Pin \varnothing 21 x 105, VRB
1 pc. 018060 Cotter Pin 4/1, galv.



Accessories

711084	0.420
781053	0.065

Bolt ISO 4014 M20 x 150-8.8, galv.
Nut ISO 7040 M20-8, galv.

VRB Truss Girder



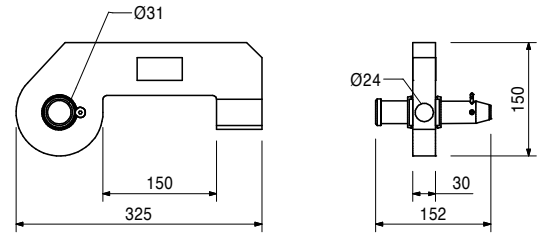
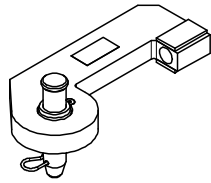
Item no.	Weight kg
125741	7.870

Articulated Spanner DW 20 VRB

Articulated clamping component for DW20 - bracing in the upper chord.

Complete with

1 pc. 125347 Fitting Pin Ø 30, VRB
1 pc. 018060 Cotter Pin 4/1, galv.



Accessories

030700	2.560
030580	0.371

Tie Rod DW 20, spec. length

Hex. Nut DW 20 SW 36/60, weldable

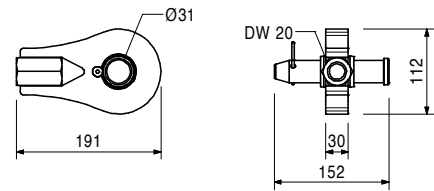
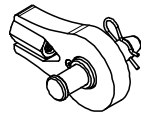
125727	4.020
--------	-------

Eye Nut DW 20 VRB

Articulated connection component for DW20 - bracing.

Complete with

1 pc. 125347 Fitting Pin Ø 30, VRB
1 pc. 018060 Cotter Pin 4/1, galv.



Accessories

030700	2.560
--------	-------

Tie Rod DW 20, spec. length

030700	2.560
030800	0.000

Tie Rod DW 20

Tie Rod DW 20, spec. length

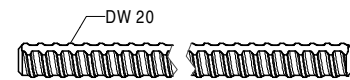
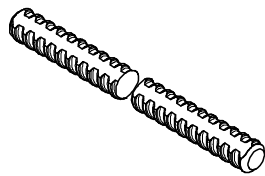
Cutting Cost Tie Rod DW 20/B 20

Note

Non-weldable! Take official Approval into consideration!

Technical Data

Permissible tension force 150 kN.



030580	0.371
--------	-------

Hex. Nut DW 20 SW 36/60, weldable

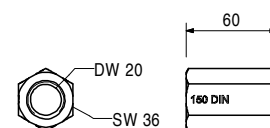
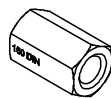
For anchoring with Tie Rod DW 20 and B 20.

Note

Weldable!

Technical Data

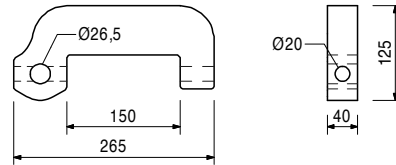
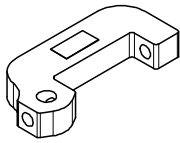
Permissible load 150 kN.



Item no.	Weight kg
115375	6.100

Articulated Spanner RCS DW 15

For tensioning and as an articulated connection to the Climbing Rail RCS, Steel Waler SRU or Bracing Shoe RCS for bracing with DW 15.



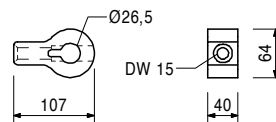
Accessories

104031	0.462	Fitting Pin Ø 21 x 120
018060	0.014	Cotter Pin 4/1, galv.
111567	0.729	Fitting Pin Ø 26 x 120
022230	0.033	Cotter Pin 5/1, galv.
030070	0.222	Hex. Nut DW 15 SW 30/50, galv.
030030	1.440	Tie Rod DW 15, spec. length

115378	1.080
--------	-------

Eye Nut RCS DW 15

As an articulated connection to the Climbing Rail RCS, Steel Waler SRU for bracing with DW 15.



Accessories

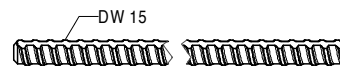
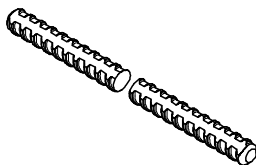
104031	0.462	Fitting Pin Ø 21 x 120
018060	0.014	Cotter Pin 4/1, galv.
111567	0.729	Fitting Pin Ø 26 x 120
022230	0.033	Cotter Pin 5/1, galv.

030030	1.440
030050	0.000

Tie Rod DW 15

Tie Rod DW 15, spec. length

Cutting Cost Tie Rod DW 15, B 15



Note

Non-weldable! Take official Approval into consideration!

Technical Data

Permissible tension force 90 kN.

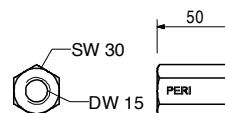
030070	0.222
--------	-------

Hex. Nut DW 15 SW 30/50, galv.

For anchoring with Tie Rod DW 15 and B 15.

Technical Data

Permissible load 90 kN.

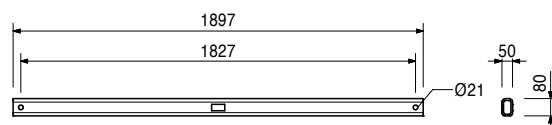
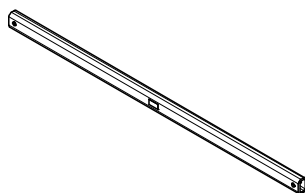


VRB Truss Girder

Item no.	Weight kg
125736	24.600

Bracing Post 2.25 m, VRB

Bracing post for a truss package with 2.25 m axis spacing.



Accessories

125764	15.000
125770	17.900

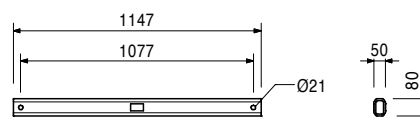
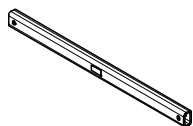
Bracing Shoe VRB

Vertical Bracing Shoe VRB

125734	14.900
--------	--------

Bracing Post 1.50 m, VRB

Bracing post for a truss package with 1.5 m axis spacing.



Accessories

125764	15.000
125770	17.900

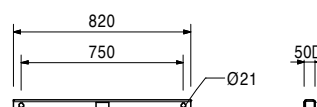
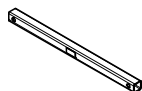
Bracing Shoe VRB

Vertical Bracing Shoe VRB

125756	4.430
--------	-------

Coupling Post 1.0 m, VRB

Post for coupling single trusses with 1.0 m axis spacing.



Accessories

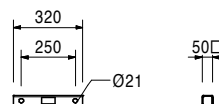
125732	5.190
--------	-------

Coupling Shoe VRB

125746	1.700
--------	-------

Coupling Post 0.5 m, VRB

Post for coupling single trusses with 0.5 m axis spacing.



Accessories

125732	5.190
--------	-------

Coupling Shoe VRB

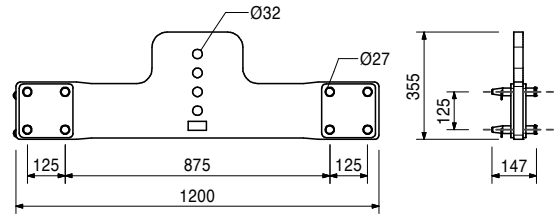
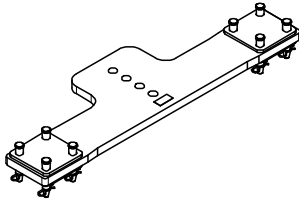
Item no.	Weight kg
128091	75.900

Bracing Traverse 150 VRB

For the connection of the truss package (1.5 m) at the Horizontal Bearing-2.

Complete with

8 pc. 125345 Fitting Pin \varnothing 26 x 105, VRB
8 pc. 018060 Cotter Pin 4/1, galv.



Accessories

131852	63.300
128103	45.000
128098	8.100

Horizontal Bearing-2 VRB

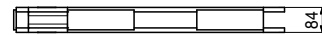
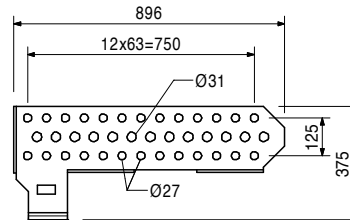
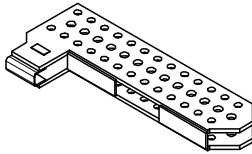
Bracing Traverse Connector VRB

Bracing Spindle VRB

128103	45.000
--------	--------

Bracing Traverse Connector VRB

For the connection of the truss package (1.5 m) at the Horizontal Bearing-2.



Accessories

128091	75.900
128098	8.100
131852	63.300

Bracing Traverse 150 VRB

Bracing Spindle VRB

Horizontal Bearing-2 VRB

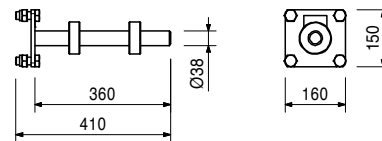
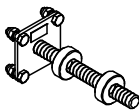
128098	8.100
--------	-------

Bracing Spindle VRB

For the connection of the truss package (1.5 m) at the Horizontal Bearing-2.

Complete with

4 pc. 780357 Bolt ISO 4017 M20 x 50-8.8, galv.
4 pc. 781053 Nut ISO 7040 M20-8, galv.
2 pc. 128093 TR38 Nut Sher



Accessories

128091	75.900
128103	45.000
131852	63.300

Bracing Traverse 150 VRB

Bracing Traverse Connector VRB

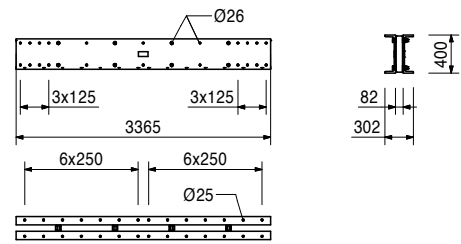
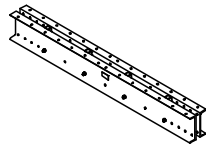
Horizontal Bearing-2 VRB

VRB Truss Girder

Item no.	Weight kg
126059	500.000

Main Beam 350 VRB

Main Beam for supporting Truss Girder VRB compatible with PERI VST Heavy Duty Shoring Tower.



Accessories

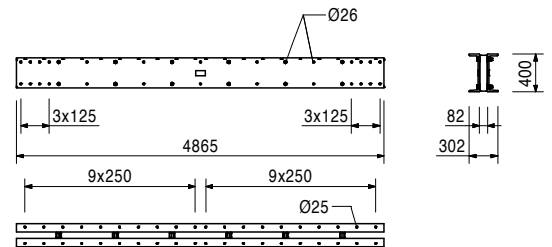
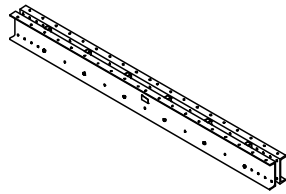
126050	78.400
--------	--------

Main Beam Connector VRB

126062	725.000
--------	---------

Main Beam 500 VRB

Main Beam for supporting Truss Girder VRB compatible with PERI VST Heavy Duty Shoring Tower.



Accessories

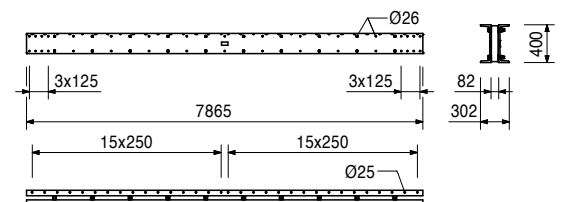
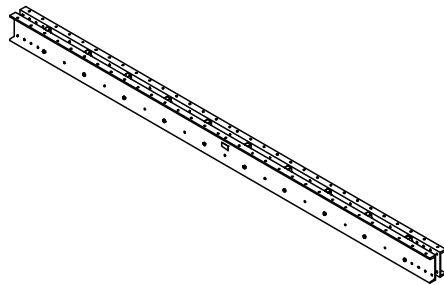
126050	78.400
--------	--------

Main Beam Connector VRB

126065	1170.000
--------	----------

Main Beam 800 VRB

Main Beam for supporting Truss Girder VRB compatible with PERI VST Heavy Duty Shoring Tower.



Accessories

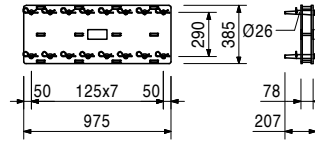
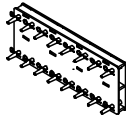
126050	78.400
--------	--------

Main Beam Connector VRB

Item no.	Weight kg
126050	78.400

Main Beam Connector VRB
For the connection of Main Beams VRB.

Complete with
16 pc. 111567 Fitting Pin \varnothing 26 x 120
16 pc. 022230 Cotter Pin 5/1, galv.



Accessories

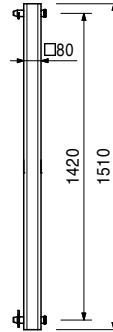
126059	500.000
126062	725.000
126065	1170.000

Main Beam 350 VRB
Main Beam 500 VRB
Main Beam 800 VRB

125413	28.000
--------	--------

Pressure Pole Starter VRB
Additional pressure pole for the assembly in Coupling Joint Frame 1.5 m VRB and Coupling Joint Frame 3.0 m VRB.

Complete with
2 pc. 125347 Fitting Pin \varnothing 30, VRB
2 pc. 018060 Cotter Pin 4/1, galv.



Accessories

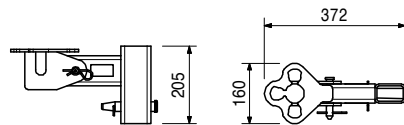
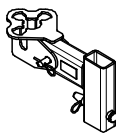
125154	675.000
125153	401.000

Coupling Joint Frame 3.0 m VRB
Coupling Joint Frame 1.5 m VRB

126355	5.610
--------	-------

Connector UP- VRB
For connecting a PERI UP Scaffold between two truss girders.

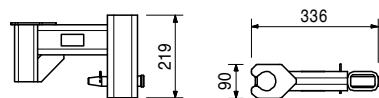
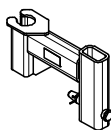
Complete with
1 pc. 125345 Fitting Pin \varnothing 26 x 105, VRB
1 pc. 018050 Pin \varnothing 16 x 65/86, galv.
2 pc. 018060 Cotter Pin 4/1, galv.



126345	7.390
--------	-------

Bracket Connector UP-VRB
For connecting a PERI UP Bracket Scaffold to a truss girder.

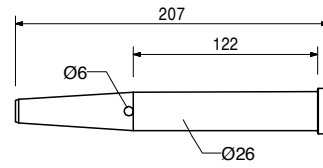
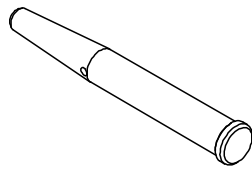
Complete with
1 pc. 018060 Cotter Pin 4/1, galv.
1 pc. 125345 Fitting Pin \varnothing 26 x 105, VRB



VRB Truss Girder

Item no.	Weight kg
111567	0.729

Fitting Pin Ø 26 x 120
For different connections.



Accessories

022230	0.033
--------	-------

Cotter Pin 5/1, galv.

018060	0.014
--------	-------

Cotter Pin 4/1, galv.



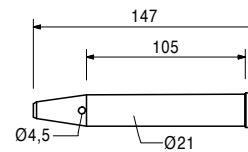
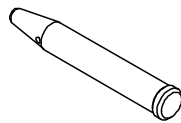
022230	0.033
--------	-------

Cotter Pin 5/1, galv.



125349	0.351
--------	-------

Fitting Pin Ø 21 x 105, VRB



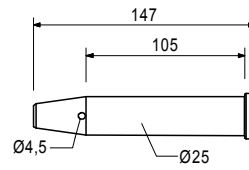
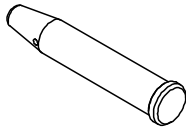
Accessories

018060	0.014
--------	-------

Cotter Pin 4/1, galv.

Item no. Weight kg

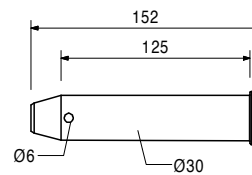
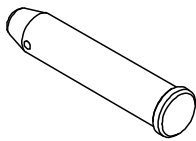
125345 0.548 **Fitting Pin Ø 26 x 105, VRB**



Accessories

022230 0.033 **Cotter Pin 5/1, galv.**

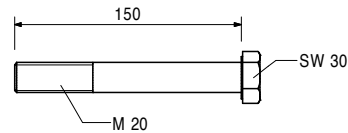
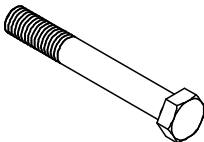
125347 0.800 **Fitting Pin Ø 30, VRB**



Accessories

022230 0.033 **Cotter Pin 5/1, galv.**

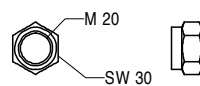
711084 0.420 **Bolt ISO 4014 M20 x 150-8.8, galv.**



Accessories

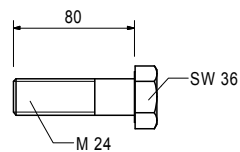
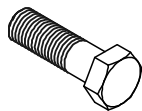
781053 0.065 **Nut ISO 7040 M20-8, galv.**

781053 0.065 **Nut ISO 7040 M20-8, galv.**
Self-locking.

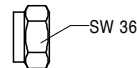


VRB Truss Girder

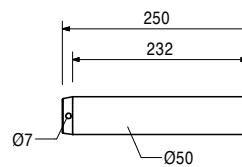
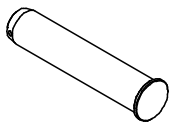
Item no.	Weight kg	
105416	0.360	Bolt ISO 4014 M24 x 80-8.8, galv.



105032	0.070	Nut ISO 7040 M24-8, galv. Self-locking.
--------	-------	---------------------------------------------------



125355	3.850	Bolt Ø 50 x 250, VRB For connecting the Truss Girder VRB-Frames.
--------	-------	----------------------------------------------------------------------------



Accessories

125356	0.086	Cotter PIN 6/1 Ø 50, VRB
125356	0.086	Cotter PIN 6/1 Ø 50, VRB

